

RURAL LIVING DEVELOPMENT GUIDELINES

MURRINDINDI SHIRE

APPENDIX 7:

RECOMMENDED NATIVE VEGETATION MURRINDINDI SHIRE

March 2004

*Appendix 7, Recommended Native Vegetation Murrindindi Shire, March 2004 has been reproduced with the permission of the Department of Sustainability and Environment using extracts from the document *Revegetation Guide for the Goulburn Broken Catchment, DNRE, July 2001.**

Further advice regarding native vegetation and recommended planting species is available from any Department of Sustainability and Environment or Goulburn Broken Catchment Management Authority office.



20 0 20 40
Kilometers



Vegetation Profile for the Alexandra Creeklines, Rivers and Floodplains - Plains - Valleys

An Excerpt from the Revegetation Guide for the Goulburn Broken Catchment

Edited by Gill Earl, Fleur Stelling, Mary Titcumb and Sue Berwick.

Department of Natural Resources & Environment

© The State of Victoria, Department of Natural Resources and Environment, 2000 ISBN 0 7311 4731 6

The accompanying sheet is an excerpt from a 400+ page document available on the GBCMA website at <http://www.gbcma.gov.vic.au/revegetation> or on CDROM and in print form available from NRE offices:

Alexandra Benalla
46 Aitken St Sydney Road Complex
Alexandra VIC 3714 Benalla VIC 3672
tel: 03-5772-0200 tel: 03-5761-16110

Tatura Wangaratta
Ferguson Rd 'Tara Court' Ford St
Tatura VIC 3616 Wangaratta VIC 3679
tel: 03-5833-5222 tel: 03-5721-5022

Disclaimer

This guide aims to improve knowledge on the information herein. As such, it is available for use for purposes of study and extension, providing due acknowledgment is given.

The opinions, advice and information contained in this publication have not been provided at the request of any person but are offered by the Department of Natural Resources & Environment solely for information purposes.

While the information contained in this publication has been formulated in good faith, the contents do not take into account all the factors which need to be considered before putting that information into practice. Accordingly, no person should rely on anything contained herein as a substitute for specific advice.

Contents

Foreword	
Acknowledgments	
Dedication	
About the Contributors	
Area covered by the Guide	
Introduction	
Part One	
Chapter 1	The Goulburn Broken Catchment and its vegetation types
Chapter 2	Rare and threatened plants in the Goulburn Broken Catchment
Chapter 3	Interconnections: animals, plants and catchment health
Chapter 4	Environmental weeds in the Goulburn Broken Catchment
Chapter 5	Remnant vegetation - values and threats
Chapter 6	Remnant vegetation, revegetation and farm planning
Chapter 7	Re-establishing native vegetation
Chapter 8	Direct seeding
Chapter 9	Salinity and native vegetation establishment
Chapter 10	Enhancing streams by revegetation and erosion control
Chapter 11	Constructed wetlands
Chapter 12	The economic use of remnant vegetation
Chapter 13	Linking commercial timber production and conservation: an approach to farm forestry
Chapter 14	Analogue forestry: a sustainable production system
Chapter 15	Values of native grasses and pastures on the farm
Chapter 16	Collecting seed from locally native plants
Chapter 17	Propagating locally native plants for revegetation

Practical Information Notes

Understorey
Natural Pest Control
Rural Dieback
Insects and Tree Decline
Mistletoe
Vegetation Management - The Catchment Approach for Landcare Groups
Getting to Know your Local Plants
Revegetation Activity Calendar
Windbreaks
Seedling Quality Tips
Planting Densities for Different Ecosystems

Part Two - Locality Maps & General Native Vegetation Profiles

Choosing the right profile
Index to general native vegetation profiles

Part Three - Plant Descriptions available only in the full print publication

Appendices

1	Rare and threatened plants in the Goulburn Broken Catchment
2	Regionally significant plants in the Goulburn Broken Catchment
3	Environmental weeds in the Goulburn Broken Catchment
4	Wildlife in the Goulburn Broken Catchment
5	Native seed suppliers
6	What to plant and where in wetlands
7	Revegetation costs
8	Regional nurseries supplying locally native plants
9	Further assistance and contacts
10	Native plant field guides

Glossary

Bibliography

Index available only in the full print publication

ALEXANDRA (LOWER CATCHMENTS) – Creeklines, Rivers and Floodplains - Plains - Valleys

Note: For general re-planting select 30% trees and at least 70% shrubs. If enhancing sites with remnant trees, select shrubs only and allow trees to regenerate. Additions of locally native species for this list are gratefully accepted - contact your local NRE office.



LANDFORM	Creeklines, Rivers and Floodplains		Plains		Valleys and Gentle Slopes	
EVC	Floodplain Riparian Woodland/Creekline Grassy Woodland		Plains Grassy Woodland		Valley Grassy Forest	
GEOLOGY & SOILS	Alluvium – clays, silts and sands		Colluvium – loams, clays, silts and sands		Fertile, well drained, reasonable water availability	
DESCRIPTION	River Red Gum woodland		Red Gum - Box grassy woodland		Mixed species shrubby - grassy woodland	
LOCATION EXAMPLE	No intact examples known; Drive along Goulburn River between Molesworth and Alexandra		Lower south east corner of McKenzie Reserve, Alexandra		East side of Maroondah Hwy, 3.1km north of Gobur-Kanumbra Rd; McKenzie Reserve, Alexandra	
TREES >8m ● Wetter sites ☞ Poorly drained sites	<i>Acacia dealbata</i> <i>A. mearnsii</i> <i>A. melanoxylon</i> <i>Eucalyptus camaldulensis</i> <i>E. melliodora</i> <i>E. microcarpa</i> ☞ <i>E. ovata</i> <i>E. rubida</i>	Silver Wattle Black Wattle Blackwood River Red Gum Yellow Box Grey Box ☞ Swamp Gum Candlebark	<i>Acacia mearnsii</i> <i>Eucalyptus albens</i> <i>E. camaldulensis</i> <i>E. melliodora</i> <i>E. microcarpa</i>	Black Wattle White Box River Red Gum Yellow Box Grey Box	● <i>Acacia dealbata</i> <i>A. implexa</i> ● <i>A. melanoxylon</i> <i>Eucalyptus albens</i> <i>E. blakelyi</i> <i>E. macrorhyncha</i> ● <i>E. melliodora</i> <i>E. microcarpa</i> <i>E. polyanthemos</i>	● Silver Wattle Lightwood ● Blackwood White Box Blakely's Red Gum Red Stringybark ● Yellow Box Grey Box Red Box
SHRUBS 1 - 8m ☞ Poorly drained sites	<i>Acacia pycnantha</i> <i>A. verniciflua</i> <i>Bursaria spinosa</i> <i>Callistemon sieberi</i> <i>Cassinia arcuata</i> <i>Hymenanthera dentata</i> ☞ <i>Leptospermum continentale</i> <i>L. lanigerum</i>	Golden Wattle Varnish Wattle Sweet Bursaria River Bottlebrush Drooping Cassinia Tree Violet ☞ Prickly Tea-tree Woolly tea-tree	<i>Acacia acinacea</i> <i>A. aculeatissima</i> <i>A. paradoxa</i> <i>A. pycnantha</i> <i>A. verniciflua</i> <i>Bursaria spinosa</i> <i>Cassinia arcuata</i>	Gold-dust Wattle Thin-leaf Wattle Hedge Wattle Golden Wattle Varnish Wattle Sweet Bursaria Drooping Cassinia	<i>Acacia acinacea</i> <i>A. genistifolia</i> <i>A. mucronata</i> <i>Cassinia aculeata</i> <i>C. arcuata</i> <i>Hymenanthera dentata</i> ☞ <i>Leptospermum continentale</i> <i>Pimelea linifolia</i>	Gold-dust Wattle Spreading Wattle Narrow-leaf Wattle Common Cassinia Drooping Cassinia Tree Violet ☞ Prickly Tea-tree Slender Rice-flower
SMALL SHRUBS <1m			<i>Dillwynia cinerascens</i>	Grey Parrot-pea	<i>Hibbertia obtusifolia</i> <i>Hovea linearis</i>	Grey Guinea-flower Common Hovea
GROUND COVERS	<i>Carex appressa</i> <i>C. fascicularis</i> <i>Elymus scaber</i> <i>Glyceria australis</i> <i>Lomandra longifolia</i> <i>Lythrum salicaria</i> <i>Microlaena stipoides</i> <i>Phragmites australis</i> <i>Poa labillardieri</i> <i>Themeda triandra</i>	Tall Sedge Tassel Sedge Common Wheat-grass Australian Sweet-grass Spiny-headed Mat-rush Purple Loostrife Weeping Grass Common Reed Common Tussock-grass Kangaroo Grass	<i>Dianella longifolia</i> <i>D. revoluta</i> <i>Elymus scaber</i> <i>Lomandra filiformis</i> <i>L. multiflora</i> <i>Poa morrisii</i> <i>P. sieberiana</i> <i>Themeda triandra</i>	Pale Flax-lily Black-anther Flax-lily Common Wheat-grass Wattle Mat-rush Many Flowered Flax-lily Soft Tussock-grass Grey Tussock-grass Kangaroo Grass	<i>Austrodanthonia eriantha</i> <i>Dianella longifolia</i> <i>Echinopogon ovatus</i> <i>Elymus scaber</i> <i>Glycine clandestina</i> <i>Pentapogon quadrifidus</i> <i>Poa sieberiana</i> var. <i>sieberiana</i> <i>Themeda triandra</i> <i>Wahlenbergia stricta</i>	Hill Wallaby-grass Pale Flax-lily Common Hedgehog-grass Common Wheat-grass Twining Glycine Five-awned Spear-grass Grey Tussock-grass Kangaroo Grass Tall Bluebell

Vegetation Profile for the

Alexandra Valleys and Gentle Slopes, Dry Slopes and Ridges, Protected Slopes and Moist Valleys

An Excerpt from the Revegetation Guide for the Goulburn Broken Catchment

Edited by Gill Earl, Fleur Stelling, Mary Titcomb and Sue Berwick.

Department of Natural Resources & Environment

© The State of Victoria, Department of Natural Resources and Environment, 2000 ISBN 0 7311 4731 6

The accompanying sheet is an excerpt from a 400+ page document available on the GBCMA website at <http://www.gbcma.gov.vic.au/revegetation> or on CDROM and in print form available from NRE offices:

Alexandra Benalla
46 Aitken St Sydney Road Complex
Alexandra VIC 3714 Benalla VIC 3672
tel: 03-5772-0200 tel: 03-5761-16110

Tatura Wangaratta
Ferguson Rd 'Tara Court' Ford St
Tatura VIC 3616 Wangaratta VIC 3679
tel: 03-5833-5222 tel: 03-5721-5022

Disclaimer

This guide aims to improve knowledge on the information herein. As such, it is available for use for purposes of study and extension, providing due acknowledgment is given.

The opinions, advice and information contained in this publication have not been provided at the request of any person but are offered by the Department of Natural Resources & Environment solely for information purposes.

While the information contained in this publication has been formulated in good faith, the contents do not take into account all the factors which need to be considered before putting that information into practice. Accordingly, no person should rely on anything contained herein as a substitute for specific advice.

Contents

Foreword	
Acknowledgments	
Dedication	
About the Contributors	
Area covered by the Guide	
Introduction	
Part One	
Chapter 1	The Goulburn Broken Catchment and its vegetation types
Chapter 2	Rare and threatened plants in the Goulburn Broken Catchment
Chapter 3	Interconnections: animals, plants and catchment health
Chapter 4	Environmental weeds in the Goulburn Broken Catchment
Chapter 5	Remnant vegetation - values and threats
Chapter 6	Remnant vegetation, revegetation and farm planning
Chapter 7	Re-establishing native vegetation
Chapter 8	Direct seeding
Chapter 9	Salinity and native vegetation establishment
Chapter 10	Enhancing streams by revegetation and erosion control
Chapter 11	Constructed wetlands
Chapter 12	The economic use of remnant vegetation
Chapter 13	Linking commercial timber production and conservation: an approach to farm forestry
Chapter 14	Analogue forestry: a sustainable production system
Chapter 15	Values of native grasses and pastures on the farm
Chapter 16	Collecting seed from locally native plants
Chapter 17	Propagating locally native plants for revegetation

Practical Information Notes

Understorey
Natural Pest Control
Rural Dieback
Insects and Tree Decline
Mistletoe
Vegetation Management - The Catchment Approach for Landcare Groups
Getting to Know your Local Plants
Revegetation Activity Calendar
Windbreaks
Seedling Quality Tips
Planting Densities for Different Ecosystems

Part Two - Locality Maps & General Native Vegetation Profiles

Choosing the right profile
Index to general native vegetation profiles

Part Three - Plant Descriptions available only in the full print publication

Appendices

- 1 Rare and threatened plants in the Goulburn Broken Catchment
- 2 Regionally significant plants in the Goulburn Broken Catchment
- 3 Environmental weeds in the Goulburn Broken Catchment
- 4 Wildlife in the Goulburn Broken Catchment
- 5 Native seed suppliers
- 6 What to plant and where in wetlands
- 7 Revegetation costs
- 8 Regional nurseries supplying locally native plants
- 9 Further assistance and contacts
- 10 Native plant field guides

Glossary

Bibliography

Index available only in the full print publication

ALEXANDRA – Valleys and Gentle Slopes - Dry Slopes and Ridges - Protected Slopes and Moist Valleys

Note: For general re-planting select 30% trees and at least 70% shrubs. If enhancing sites with remnant trees, select shrubs only and allow trees to regenerate. Additions of locally native species for this list are gratefully accepted - contact your local NRE office.



LANDFORM	Valleys and Gentle Slopes		Dry Slopes and Ridges		Protected Upper Slopes, Steep Gullies, Moist Valleys	
EVC	Valley Grassy Forest, Grassy Woodland		Grassy Dry Forest		Herb-rich Foothill Forest	
GEOLOGY & SOILS	Fertile, well drained, reasonable water availability		Variety of geology; well drained soils, sometimes skeletal and rocky		Variety of geology ; moist, fertile soils.	
DESCRIPTION	Mixed species shrubby - grassy woodland		Stringybark - Box dry grassy woodland		Gum - Peppermint shrubby, moist tall forest	
LOCATION EXAMPLE	East side of Maroondah Hwy, 3.1km north of Gobur-Kanumbra Rd; McKenzie Res; Hills south of Ut Creek Rd, c 3 km past Goulburn Valley Hwy		Skyline Rd, c 2-3 km north of Haines Saddle		Skyline Rd, c 6 km north of Haines Saddle, at unnamed track to Collier Bay; Gobur Rd, west of McRae Rd	
TREES >8m ♦ Wetter sites ↑ Upper elevations	<ul style="list-style-type: none"> ♦ <i>Acacia dealbata</i> <i>A. implexa</i> <i>A. mearnsii</i> ♦ <i>A. melanoxylon</i> <i>Eucalyptus albens</i> <i>E. blakelyi</i> ↑ <i>E. dives</i> ♦ <i>E. melliodora</i> <i>E. polyanthemos</i> <i>E. rubida</i> 	<ul style="list-style-type: none"> ♦ Silver Wattle Lightwood Black Wattle ♦ Blackwood White Box Blakely's Red Gum ↑ Broad-leaved Peppermint ♦ Yellow Box Red Box Candlebark 	<ul style="list-style-type: none"> <i>Acacia implexa</i> <i>Eucalyptus blakelyi</i> <i>E. dives</i> <i>E. goniocalyx</i> <i>E. macrorhyncha</i> <i>E. melliodora</i> <i>E. obliqua</i> <i>E. polyanthemos</i> 	<ul style="list-style-type: none"> Lightwood Blakely's Red Gum Broad-leaved Peppermint Long-leaf Box Red Stringybark Yellow Box Messmate Red Box 	<ul style="list-style-type: none"> <i>Acacia dealbata</i> <i>A. melanoxylon</i> <i>Eucalyptus dives</i> <i>E. globulus</i> subsp. <i>bicostata</i> <i>E. melliodora</i> <i>E. obliqua</i> <i>E. radiata</i> <i>E. rubida</i> 	<ul style="list-style-type: none"> Silver Wattle Blackwood Broad-leaved Peppermint Blue Gum (Eurabbie) Yellow Box Messmate Narrow-leaf Peppermint Candlebark
SHRUBS 1 - 8m ⚡ Poorly drained sites ↓ Lower elevations ↑ Upper elevations	<ul style="list-style-type: none"> <i>Acacia genistifolia</i> <i>A. mucronata</i> <i>A. verniciflua</i> <i>Hymenanthera dentata</i> ⚡ <i>Leptospermum continentale</i> <i>Pimelea linifolia</i> 	<ul style="list-style-type: none"> Spreading Wattle Narrow-leaf Wattle Varnish Wattle Tree Violet ⚡ Prickly Tea-tree Slender Rice-flower 	<ul style="list-style-type: none"> <i>Acacia paradoxa</i> <i>A. rubida</i> <i>A. verniciflua</i> <i>Correa reflexa</i> <i>Pultenaea muelleri</i> 	<ul style="list-style-type: none"> Hedge Wattle Red-stem Wattle Varnish Wattle Common Correa Mueller's Bush-pea 	<ul style="list-style-type: none"> <i>Acacia pravissima</i> ↓ <i>A. rubida</i> ↑ <i>Coprosma hirtella</i> ↑ <i>C. quadrifida</i> <i>Epacris impressa</i> ↓ <i>Leptospermum continentale</i> 	<ul style="list-style-type: none"> Ovens Wattle ↓ Red-stem Wattle ↑ Rough Coprosma ↑ Prickly Currant-bush Common Heath ↓ Prickly Tea-tree
SMALL SHRUBS <1m	<i>Hibbertia obtusifolia</i>	Grey Guinea-flower	<ul style="list-style-type: none"> <i>Acacia aculeatissima</i> <i>Dillwynia phyllicoides</i> 	<ul style="list-style-type: none"> Thin-leaf Wattle Small-leaf Parrot-pea 	<ul style="list-style-type: none"> <i>Hibbertia obtusifolia</i> <i>Tetralochea ciliata</i> 	<ul style="list-style-type: none"> Grey Guinea-flower Pink-bells
GROUND COVERS	<ul style="list-style-type: none"> <i>Austrodanthonia eriantha</i> <i>Dianella longifolia</i> <i>Echinopogon ovatus</i> <i>Elymus scaber</i> <i>Glycine clandestina</i> <i>Pentapogon quadrifidus</i> <i>Poa sieberiana</i> var. <i>sieberiana</i> <i>Themeda triandra</i> <i>Wahlenbergia stricta</i> 	<ul style="list-style-type: none"> Hill Wallaby-grass Pale Flax-lily Common Hedgehog-grass Common Wheat-grass Twining Glycine Five-awned Spear-grass Grey Tussock-grass Kangaroo Grass Tall Bluebell 	<ul style="list-style-type: none"> <i>Austrodanthonia pilosa</i> <i>Elymus scaber</i> <i>Hardenbergia violacea</i> <i>Joycea pallida</i> <i>Lomandra filiformis</i> <i>Microlaena stipoides</i> <i>Platylobium formosum</i> <i>Poa sieberiana</i> var. <i>sieberiana</i> <i>Themeda triandra</i> 	<ul style="list-style-type: none"> Velvet Wallaby-grass Common Wheat-grass Purple Coral-pea Silver-top Wallaby-grass Wattle Mat-rush Weeping Grass Handsome Flat-pea Grey Tussock-grass Kangaroo Grass 	<ul style="list-style-type: none"> <i>Austrodanthonia penicillata</i> <i>Billardiera scandens</i> <i>Clematis aristata</i> <i>Dianella tasmanica</i> <i>Echinopogon ovatus</i> <i>Elymus scaber</i> <i>Microlaena stipoides</i> <i>Poa sieberiana</i> var. <i>sieberiana</i> <i>Viola hederacea</i> 	<ul style="list-style-type: none"> Slender Wallaby-grass Common Apple-berry Mountain Clematis Tasman Flax-lily Common Hedgehog-grass Common Wheat-grass Weeping Grass Grey Tussock-grass Ivy-leaf Violet

Vegetation Profile for the Alexandra Valleys and Low Hills - Protected Slopes - Streams and Swamps

An Excerpt from the Revegetation Guide for the Goulburn Broken Catchment

Edited by Gill Earl, Fleur Stelling, Mary Titcumb and Sue Berwick.

Department of Natural Resources & Environment

© The State of Victoria, Department of Natural Resources and Environment, 2000 ISBN 0 7311 4731 6

The accompanying sheet is an excerpt from a 400+ page document available on the GBCMA website at <http://www.gbcma.gov.vic.au/revegetation> or on CDROM and in print form available from NRE offices:

Alexandra Benalla
46 Aitken St Sydney Road Complex
Alexandra VIC 3714 Benalla VIC 3672
tel: 03-5772-0200 tel: 03-5761-16110

Tatura Wangaratta
Ferguson Rd 'Tara Court' Ford St
Tatura VIC 3616 Wangaratta VIC 3679
tel: 03-5833-5222 tel: 03-5721-5022

Disclaimer

This guide aims to improve knowledge on the information herein. As such, it is available for use for purposes of study and extension, providing due acknowledgment is given.

The opinions, advice and information contained in this publication have not been provided at the request of any person but are offered by the Department of Natural Resources & Environment solely for information purposes.

While the information contained in this publication has been formulated in good faith, the contents do not take into account all the factors which need to be considered before putting that information into practice. Accordingly, no person should rely on anything contained herein as a substitute for specific advice.

Contents

Foreword	
Acknowledgments	
Dedication	
About the Contributors	
Area covered by the Guide	
Introduction	
Part One	
Chapter 1	The Goulburn Broken Catchment and its vegetation types
Chapter 2	Rare and threatened plants in the Goulburn Broken Catchment
Chapter 3	Interconnections: animals, plants and catchment health
Chapter 4	Environmental weeds in the Goulburn Broken Catchment
Chapter 5	Remnant vegetation - values and threats
Chapter 6	Remnant vegetation, revegetation and farm planning
Chapter 7	Re-establishing native vegetation
Chapter 8	Direct seeding
Chapter 9	Salinity and native vegetation establishment
Chapter 10	Enhancing streams by revegetation and erosion control
Chapter 11	Constructed wetlands
Chapter 12	The economic use of remnant vegetation
Chapter 13	Linking commercial timber production and conservation: an approach to farm forestry
Chapter 14	Analogue forestry: a sustainable production system
Chapter 15	Values of native grasses and pastures on the farm
Chapter 16	Collecting seed from locally native plants
Chapter 17	Propagating locally native plants for revegetation

Practical Information Notes

Understorey
Natural Pest Control
Rural Dieback
Insects and Tree Decline
Mistletoe
Vegetation Management - The Catchment Approach for Landcare Groups
Getting to Know your Local Plants
Revegetation Activity Calendar
Windbreaks
Seedling Quality Tips
Planting Densities for Different Ecosystems

Part Two - Locality Maps & General Native Vegetation Profiles

Choosing the right profile
Index to general native vegetation profiles

Part Three - Plant Descriptions available only in the full print publication

Appendices

1	Rare and threatened plants in the Goulburn Broken Catchment
2	Regionally significant plants in the Goulburn Broken Catchment
3	Environmental weeds in the Goulburn Broken Catchment
4	Wildlife in the Goulburn Broken Catchment
5	Native seed suppliers
6	What to plant and where in wetlands
7	Revegetation costs
8	Regional nurseries supplying locally native plants
9	Further assistance and contacts
10	Native plant field guides

Glossary

Bibliography

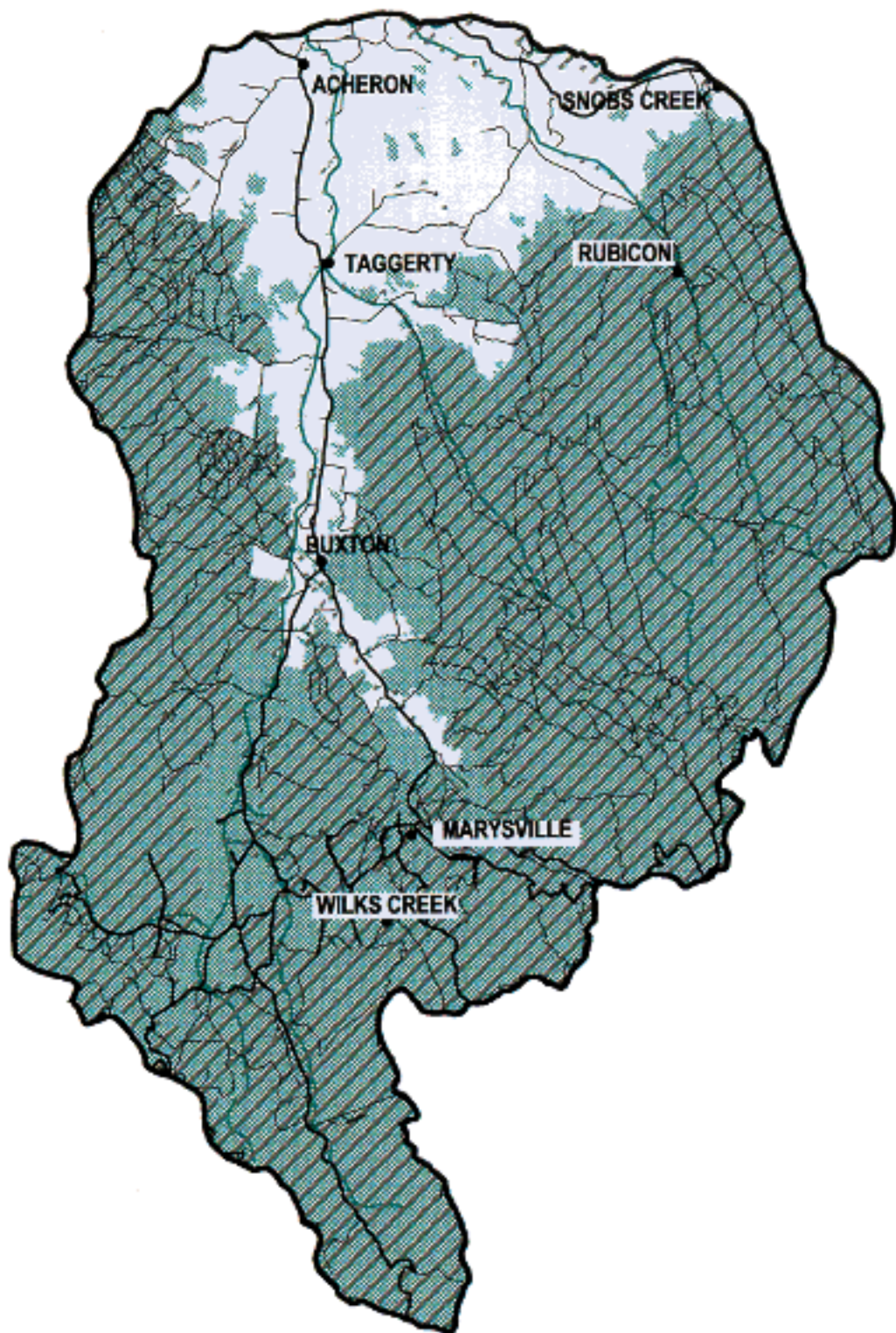
Index available only in the full print publication

ALEXANDRA (UPPER CATCHMENTS) – Valleys and Low Hills - Protected Slopes - Streams – shrubs and Swamps

Note: For general re-planting select 30% trees and at least 70% shrubs. If enhancing sites with remnant trees, select shrubs only and allow trees to regenerate. Additions of locally native species for this list are gratefully accepted - contact your local NRE office.



LANDFORM	Valleys and Low Hills		Protected Upper Slopes, Moist Gullies, Steep Valleys		Swift-flowing Streams and Swampy Drainage Lines	
EVC	Grassy Woodland/Valley Grassy Forest		Herb-rich Foothill Forest		Riparian Forest/Swampy Riparian Woodland	
GEOLOGY & SOILS	Fertile, well drained, reasonable water availability		Variety of Geologies: Moist, fertile soils.		Range of geology – sands, silts and loams	
DESCRIPTION	Mixed species shrubby - grassy woodland		Blue Gum, Candlebark and Peppermint Shrubby Moist Tall Forest		Riparian forest – shrubby woodland swamps	
LOCATION EXAMPLE	East side of Maroondah Hwy, 3.1km north of Gobur-Kanumbra Rd; McKenzie Res; Hills south of Ut Creek Rd, c 3 km past Goulburn Valley Hwy		Skyline Rd, c 4.5 km north of Maintongan Rd; Gobur Rd, west of McRae Rd		Johnson Creek, on Johnson Creek Rd, upstream from Misery Tk; Creeks in the Gobur-Yarck valley	
TREES >8m ♦ Wetter sites ≡ Poorly drained sites	<ul style="list-style-type: none"> ♦ <i>Acacia dealbata</i> <i>A. implexa</i> ♦ <i>A. melanoxylon</i> <i>Eucalyptus albens</i> <i>E. blakelyi</i> <i>E. macrorhyncha</i> ♦ <i>E. melliodora</i> <i>E. microcarpa</i> <i>E. polyanthemos</i> 	<ul style="list-style-type: none"> ♦ Silver Wattle Lightwood ♦ Blackwood White Box Blakely's Red Gum Red Stringybark ♦ Yellow Box Grey Box Red Box 	<ul style="list-style-type: none"> <i>Acacia dealbata</i> <i>A. melanoxylon</i> <i>Eucalyptus dives</i> <i>E. globulus</i> subsp. <i>bicostata</i> <i>E. melliodora</i> <i>E. obliqua</i> <i>E. radiata</i> <i>E. rubida</i> 	<ul style="list-style-type: none"> Silver Wattle Blackwood Broad-leaved Peppermint Blue Gum (Eurabbie) Yellow Box Messmate Narrow-leaf Peppermint Candlebark 	<ul style="list-style-type: none"> <i>Acacia dealbata</i> <i>A. melanoxylon</i> ≡ <i>Eucalyptus camphora</i> subsp. <i>humeana</i> <i>E. dalrympleana</i> <i>E. globulus</i> subsp. <i>bicostata</i> ≡ <i>E. ovata</i> <i>E. viminalis</i> <i>Exocarpos cupressiformis</i> <i>Pomaderris aspera</i> 	<ul style="list-style-type: none"> Silver Wattle Blackwood ≡ Mountain Swamp Gum Mountain Gum Blue Gum (Eurabbie) ≡ Swamp Gum Manna Gum Cherry Ballart Hazel Pomaderris
SHRUBS 1 - 8m ≡ Poorly drained sites ↑ Upper elevations ↓ Lower elevations	<ul style="list-style-type: none"> <i>Acacia genistifolia</i> <i>A. verniciflua</i> <i>A. mucronata</i> <i>Hymenathera dentata</i> ≡ <i>Leptospermum continentale</i> <i>Pimelea linifolia</i> 	<ul style="list-style-type: none"> Spreading Wattle Varnish Wattle Narrow-leaf Wattle Tree Violet ≡ Prickly Tea-tree Slender Rice-flower 	<ul style="list-style-type: none"> <i>Acacia pravissima</i> ↓ <i>A. rubida</i> ↑ <i>Coprosma hirtella</i> ↑ <i>C. quadrifida</i> <i>Epacris impressa</i> ↓ <i>Leptospermum continentale</i> 	<ul style="list-style-type: none"> Ovens Wattle ↓ Red-stem Wattle ↑ Rough Coprosma ↑ Prickly Currant-bush Common Heath ↓ Prickly Tea-tree 	<ul style="list-style-type: none"> <i>Bursaria spinosa</i> <i>Callistemon sieberi</i> ↑ <i>Coprosma quadrifida</i> <i>Dodonaea viscosa</i> subsp. <i>angustissima</i> ↓ <i>Leptospermum continentale</i> ↑ <i>Lomatia fraseri</i> ↑ <i>Pimelea axiflora</i> <i>Prostanthera lasianthos</i> 	<ul style="list-style-type: none"> Sweet Bursaria River Bottlebrush ↑ Prickly Currant-bush Slender Hop-bush ↓ Prickly Tea-tree ↑ Tree Lomatia ↑ Bootlace Bush Victorian Christmas-bush
SMALL SHRUBS <1m	<i>Hibbertia obtusifolia</i>	Grey Guinea-flower	<i>Hibbertia obtusifolia</i> <i>Tetradlea ciliata</i>	Grey Guinea-flower Pink-bells		
GROUND COVERS	<ul style="list-style-type: none"> <i>Austrodanthonia eriantha</i> <i>Dianella longifolia</i> <i>Echinopogon ovatus</i> <i>Elymus scaber</i> <i>Glycine clandestina</i> <i>Pentapogon quadrifidus</i> <i>Poa sieberiana</i> var. <i>sieberiana</i> <i>Themeda triandra</i> <i>Wahlenbergia stricta</i> 	<ul style="list-style-type: none"> Hill Wallaby-grass Pale Flax-lily Common Hedgehog-grass Common Wheat-grass Twining Glycine Five-awned Spear-grass Grey Tussock-grass Kangaroo Grass Tall Bluebell 	<ul style="list-style-type: none"> <i>Austrodanthonia penicillata</i> <i>Billardiera scandens</i> <i>Clematis aristata</i> <i>Dianella tasmanica</i> <i>Echinopogon ovatus</i> <i>Elymus scaber</i> <i>Microlaena stipoides</i> <i>Poa sieberiana</i> var. <i>sieberiana</i> <i>Viola hederacea</i> 	<ul style="list-style-type: none"> Slender Wallaby-grass Common Apple-berry Mountain Clematis Tasman Flax-lily Common Hedgehog-grass Common Wheat-grass Weeping Grass Grey Tussock-grass Ivy-leaf Violet 	<ul style="list-style-type: none"> <i>Blechnum nudum</i> <i>Carex appressa</i> <i>C. fascicularis</i> <i>Cyperus lucidus</i> <i>Dianella tasmanica</i> <i>Echinopogon ovatus</i> <i>Lythrum salicaria</i> <i>Microlaena stipoides</i> <i>Poa ensiformis</i> <i>P. helmsii</i> 	<ul style="list-style-type: none"> Fishbone Water-fern Tall Sedge Tassel Sedge Leafy Flat-sedge Tasman Flax-lily Common Hedgehog-grass Purple Loosetrife Weeping Grass Sword Tussock-grass Tall Tussock-grass



Vegetation Profile for the Marysville Valleys and Gentle Slopes - Dry Slopes and Ridges - Protected Slopes and Moist Valleys

An Excerpt from the Revegetation Guide for the Goulburn Broken Catchment

Edited by Gill Earl, Fleur Stelling, Mary Titcumb and Sue Berwick.

Department of Natural Resources & Environment

© The State of Victoria, Department of Natural Resources and Environment, 2000 ISBN 0 7311 4731 6

The accompanying sheet is an excerpt from a 400+ page document available on the GBCMA website at <http://www.gbcma.gov.vic.au/revegetation> or on CDROM and in print form available from NRE offices:

Alexandra Benalla
46 Aitken St Sydney Road Complex
Alexandra VIC 3714 Benalla VIC 3672
tel: 03-5772-0200 tel: 03-5761-16110

Tatura Wangaratta
Ferguson Rd 'Tara Court' Ford St
Tatura VIC 3616 Wangaratta VIC 3679
tel: 03-5833-5222 tel: 03-5721-5022

Disclaimer

This guide aims to improve knowledge on the information herein. As such, it is available for use for purposes of study and extension, providing due acknowledgment is given.

The opinions, advice and information contained in this publication have not been provided at the request of any person but are offered by the Department of Natural Resources & Environment solely for information purposes.

While the information contained in this publication has been formulated in good faith, the contents do not take into account all the factors which need to be considered before putting that information into practice. Accordingly, no person should rely on anything contained herein as a substitute for specific advice.

Contents

Foreword	
Acknowledgments	
Dedication	
About the Contributors	
Area covered by the Guide	
Introduction	
Part One	
Chapter 1	The Goulburn Broken Catchment and its vegetation types
Chapter 2	Rare and threatened plants in the Goulburn Broken Catchment
Chapter 3	Interconnections: animals, plants and catchment health
Chapter 4	Environmental weeds in the Goulburn Broken Catchment
Chapter 5	Remnant vegetation - values and threats
Chapter 6	Remnant vegetation, revegetation and farm planning
Chapter 7	Re-establishing native vegetation
Chapter 8	Direct seeding
Chapter 9	Salinity and native vegetation establishment
Chapter 10	Enhancing streams by revegetation and erosion control
Chapter 11	Constructed wetlands
Chapter 12	The economic use of remnant vegetation
Chapter 13	Linking commercial timber production and conservation: an approach to farm forestry
Chapter 14	Analogue forestry: a sustainable production system
Chapter 15	Values of native grasses and pastures on the farm
Chapter 16	Collecting seed from locally native plants
Chapter 17	Propagating locally native plants for revegetation

Practical Information Notes

Understorey
Natural Pest Control
Rural Dieback
Insects and Tree Decline
Mistletoe
Vegetation Management - The Catchment Approach for Landcare Groups
Getting to Know your Local Plants
Revegetation Activity Calendar
Windbreaks
Seedling Quality Tips
Planting Densities for Different Ecosystems

Part Two - Locality Maps & General Native Vegetation Profiles

Choosing the right profile
Index to general native vegetation profiles

Part Three - Plant Descriptions available only in the full print publication

Appendices

1	Rare and threatened plants in the Goulburn Broken Catchment
2	Regionally significant plants in the Goulburn Broken Catchment
3	Environmental weeds in the Goulburn Broken Catchment
4	Wildlife in the Goulburn Broken Catchment
5	Native seed suppliers
6	What to plant and where in wetlands
7	Revegetation costs
8	Regional nurseries supplying locally native plants
9	Further assistance and contacts
10	Native plant field guides

Glossary

Bibliography

Index available only in the full print publication

MARYSVILLE – Valleys and Gentle Slopes - Dry Slopes and Ridges - Protected Slopes and Moist Valleys

Note: For general re-planting select 30% trees and at least 70% shrubs. If enhancing sites with remnant trees, select shrubs only and allow trees to regenerate. Additions of locally native species for this list are gratefully accepted - contact your local NRE office.



LANDFORM	Valleys and Gentle Slopes		Dry Slopes and Ridges		Protected Upper Slopes, Steep Gullies, Moist Valleys	
EVC	Valley Grassy Forest		Grassy Dry Forest		Herb-rich Foothill Forest	
GEOLOGY & SOILS	Alluvium - fertile, well drained soils, reasonable water availability		Shallow, well drained soils, sometimes rocky.		Variety of geology	
DESCRIPTION	Mixed species grassy - shrubby woodland		Stringybark - Box dry grassy forest		Blue Gum - Manna Gum - Peppermint tall moist forest	
LOCATION EXAMPLE	Connellys Creek Rd, c 4km from Maroondah Highway, Acheron		West facing slopes at intersection of Connellys Rd and Tower Tk		Farrers Lane, south of Clendale Lane at start of Murrindindi State Forest	
TREES >8m ♦ Wetter sites ↑ Upper elevations	<ul style="list-style-type: none"> ♦ <i>Acacia dealbata</i> <i>A. mearnsii</i> ♦ <i>A. melanoxylon</i> ↑ <i>Eucalyptus dives</i> <i>E. macrohyncha</i> <i>E. polyanthemos</i> <i>E. rubida</i> 	<ul style="list-style-type: none"> ♦ Silver Wattle Black Wattle ♦ Blackwood ↑ Broad-leaved Peppermint Red Stringybark Red Box Candlebark 	<ul style="list-style-type: none"> <i>Eucalyptus dives</i> <i>E. macrohyncha</i> <i>E. obliqua</i> <i>E. polyanthemos</i> <i>E. rubida</i> <i>Exocarpos cupressiformis</i> 	<ul style="list-style-type: none"> Broad-leaved Peppermint Red Stringybark Messmate Red Box Candlebark Cherry Ballart 	<ul style="list-style-type: none"> <i>Acacia dealbata</i> <i>A. melanoxylon</i> <i>Eucalyptus dives</i> <i>E. globulus</i> subsp. <i>bicostata</i> <i>E. obliqua</i> <i>E. radiata</i> <i>E. rubida</i> <i>E. viminalis</i> 	<ul style="list-style-type: none"> Silver Wattle Blackwood Broad-leaved Peppermint Blue Gum (Eurabbie) Messmate Narrow-leaf Peppermint Candlebark Manna Gum
SHRUBS 1 - 8m ⚡ Poorly drained sites ↑ Upper elevations	<ul style="list-style-type: none"> <i>Bursaria spinosa</i> <i>Cassinia aculeata</i> <i>Exocarpos strictus</i> <i>Hymenanthera dentata</i> ⚡ <i>Leptospermum continentale</i> <i>Pimelea linifolia</i> 	<ul style="list-style-type: none"> Sweet Bursaria Common Cassinia Pale-fruit Ballart Tree Violet ⚡ Prickly Tea-tree Slender Rice-flower 	<ul style="list-style-type: none"> <i>Acacia verniciflua</i> <i>Bursaria spinosa</i> <i>Cassinia aculeata</i> <i>Correa reflexa</i> <i>Daviesia leptophylla</i> <i>Pimelea linifolia</i> <i>Pultenaea daphnoides</i> 	<ul style="list-style-type: none"> Varnish Wattle Sweet Bursaria Common Cassinia Common Correa Narrow-leaf Bitter-pea Slender Rice-flower Large-leaf Bush-pea 	<ul style="list-style-type: none"> <i>Cassinia aculeata</i> ↑ <i>Coprosma hirtella</i> ↑ <i>C. quadrifida</i> <i>Daviesia latifolia</i> <i>Epacris impressa</i> <i>Pimelea linifolia</i> <i>Pultenaea forsythiana</i> <i>Spyridium parvifolium</i> 	<ul style="list-style-type: none"> Common Cassinia ↑ Rough Coprosma ↑ Prickly Currant-bush Hop Bitter-pea Common Heath Slender Rice-flower Prickly Bush-pea Dusty Miller
SMALL SHRUBS <1m	<ul style="list-style-type: none"> <i>Hibbertia obtusifolia</i> <i>Pimelea humilis</i> 	<ul style="list-style-type: none"> Grey Guinea-flower Common Rice-flower 	<ul style="list-style-type: none"> <i>Dillwynia sericea</i> <i>Hibbertia obtusifolia</i> <i>Leucopogon virgatus</i> 	<ul style="list-style-type: none"> Prickly Parrot-pea Grey Guinea-flower Common Beard-heath 	<ul style="list-style-type: none"> <i>Hibbertia obtusifolia</i> <i>Leucopogon hookeri</i> <i>Tetraloche ciliata</i> 	<ul style="list-style-type: none"> Grey Guinea-flower Mountain Beard-heath Pink-bells
GROUND COVERS	<ul style="list-style-type: none"> <i>Acrotiche prostrata</i> <i>Dianella longifolia</i> <i>Elymus scaber</i> <i>Glycine clandestina</i> <i>Lomandra filiformis</i> <i>Microlaena stipoides</i> <i>Pentapogon quadrifidus</i> <i>Poa morrisii</i> <i>Themeda triandra</i> 	<ul style="list-style-type: none"> Trailing Ground-berry Pale Flax-lily Common Wheat-grass Twining Glycine Wattle Mat-rush Weeping Grass Five-awned Spear-grass Soft Tussock-grass Kangaroo Grass 	<ul style="list-style-type: none"> <i>Astroloma humifusum</i> <i>Austrodanthonia pilosa</i> <i>Elymus scaber</i> <i>Hardenbergia violacea</i> <i>Joycea pallida</i> <i>Lomandra filiformis</i> <i>Platylobium formosum</i> <i>Poa sieberiana</i> var. <i>sieberiana</i> 	<ul style="list-style-type: none"> Cranberry Heath Velvet Wallaby-grass Common Wheat-grass Purple Coral-pea Silvertop Wallaby-grass Wattle Mat-rush Handsome Flat-pea Grey Tussock-grass 	<ul style="list-style-type: none"> <i>Acrotiche serrulata</i> <i>Billardiera scandens</i> <i>Clematis aristata</i> <i>Dianella tasmanica</i> <i>Echinopogon ovatus</i> <i>Elymus scaber</i> <i>Lomandra longifolia</i> <i>Microlaena stipoides</i> <i>Poa ensiformis</i> 	<ul style="list-style-type: none"> Honey-pots Common Apple-berry Mountain Clematis Tasman Flax-lily Common Hedgehog-grass Common Wheat-grass Spiny-headed Mat-rush Weeping Grass Sword Tussock-grass

Vegetation Profile for the Marysville (Lower Catchments) Creeklines, Rivers and Floodplains - Plains - Valleys

An Excerpt from the Revegetation Guide for the Goulburn Broken Catchment

Edited by Gill Earl, Fleur Stelling, Mary Titcumb and Sue Berwick.

Department of Natural Resources & Environment

© The State of Victoria, Department of Natural Resources and Environment, 2000 ISBN 0 7311 4731 6

The accompanying sheet is an excerpt from a 400+ page document available on the GBCMA website at <http://www.gbcma.gov.vic.au/revegetation> or on CDROM and in print form available from NRE offices:

Alexandra Benalla
46 Aitken St Sydney Road Complex
Alexandra VIC 3714 Benalla VIC 3672
tel: 03-5772-0200 tel: 03-5761-16110

Tatura Wangaratta
Ferguson Rd 'Tara Court' Ford St
Tatura VIC 3616 Wangaratta VIC 3679
tel: 03-5833-5222 tel: 03-5721-5022

Disclaimer

This guide aims to improve knowledge on the information herein. As such, it is available for use for purposes of study and extension, providing due acknowledgment is given.

The opinions, advice and information contained in this publication have not been provided at the request of any person but are offered by the Department of Natural Resources & Environment solely for information purposes.

While the information contained in this publication has been formulated in good faith, the contents do not take into account all the factors which need to be considered before putting that information into practice. Accordingly, no person should rely on anything contained herein as a substitute for specific advice.

Contents

Foreword	
Acknowledgments	
Dedication	
About the Contributors	
Area covered by the Guide	
Introduction	
Part One	
Chapter 1	The Goulburn Broken Catchment and its vegetation types
Chapter 2	Rare and threatened plants in the Goulburn Broken Catchment
Chapter 3	Interconnections: animals, plants and catchment health
Chapter 4	Environmental weeds in the Goulburn Broken Catchment
Chapter 5	Remnant vegetation - values and threats
Chapter 6	Remnant vegetation, revegetation and farm planning
Chapter 7	Re-establishing native vegetation
Chapter 8	Direct seeding
Chapter 9	Salinity and native vegetation establishment
Chapter 10	Enhancing streams by revegetation and erosion control
Chapter 11	Constructed wetlands
Chapter 12	The economic use of remnant vegetation
Chapter 13	Linking commercial timber production and conservation: an approach to farm forestry
Chapter 14	Analogue forestry: a sustainable production system
Chapter 15	Values of native grasses and pastures on the farm
Chapter 16	Collecting seed from locally native plants
Chapter 17	Propagating locally native plants for revegetation

Practical Information Notes

Understorey
Natural Pest Control
Rural Dieback
Insects and Tree Decline
Mistletoe
Vegetation Management - The Catchment Approach for Landcare Groups
Getting to Know your Local Plants
Revegetation Activity Calendar
Windbreaks
Seedling Quality Tips
Planting Densities for Different Ecosystems

Part Two - Locality Maps & General Native Vegetation Profiles

Choosing the right profile
Index to general native vegetation profiles

Part Three - Plant Descriptions available only in the full print publication

Appendices

1	Rare and threatened plants in the Goulburn Broken Catchment
2	Regionally significant plants in the Goulburn Broken Catchment
3	Environmental weeds in the Goulburn Broken Catchment
4	Wildlife in the Goulburn Broken Catchment
5	Native seed suppliers
6	What to plant and where in wetlands
7	Revegetation costs
8	Regional nurseries supplying locally native plants
9	Further assistance and contacts
10	Native plant field guides

Glossary

Bibliography

Index available only in the full print publication

MARYSVILLE (LOWER CATCHMENTS) – Creeklines, Rivers and Floodplains - Plains - Valleys

Note: For general re-planting select 30% trees and at least 70% shrubs. If enhancing sites with remnant trees, select shrubs only and allow trees to regenerate. Additions of locally native species for this list are gratefully accepted - contact your local NRE office.



LANDFORM	Creeklines, Rivers and Floodplains		Plains		Valleys and Gentle Slopes	
EVC	Creekline Grassy Woodland / Floodplain Riparian Woodland		Plains Grassy Woodland		Valley Grassy Forest	
GEOLOGY & SOILS	Alluvial sediments - clays and silts		Colluvium and alluvium – clays and loams		Fertile, well drained, reasonable water availability	
DESCRIPTION	Red Gum grassy woodland		Box - Gum grassy woodland		Mixed species shrubby - grassy woodland	
LOCATION EXAMPLE	Acheron River, below Clendale Lane, Taggerty		No intact examples known: Flats beside the Acheron River		Connellys Creek Rd, c 4km from Maroondah Highway, Acheron	
TREES >8m ⇔ On adjacent flats ♣ Wetter sites	<i>Acacia dealbata</i> <i>A. mearnsii</i> <i>A. melanoxylon</i> <i>Eucalyptus camaldulensis</i> ⇔ <i>E. melliodora</i> ⇔ <i>E. microcarpa</i> <i>E. ovata</i>	Silver Wattle Black Wattle Blackwood RiverRed Gum ⇔ Yellow Box ⇔ Grey Box Swamp Gum	<i>Acacia melanoxylon</i> <i>Eucalyptus albens</i> <i>E. camaldulensis</i> <i>E. melliodora</i> <i>E. microcarpa</i>	Blackwood White Box River Red Gum Yellow Box Grey Box	♣ <i>Acacia dealbata</i> <i>A. implexa</i> <i>A. mearnsii</i> ♣ <i>A. melanoxylon</i> <i>Eucalyptus goniocalyx</i> <i>E. macrorhyncha</i> ♣ <i>E. melliodora</i> <i>E. polyanthemos</i>	♣ Silver Wattle Lightwood Black Wattle ♣ Blackwood Long-leaf Box Red Stringybark ♣ Yellow Box Red Box
SHRUBS 1 - 8m ⚡ Poorly drained sites	<i>Acacia verniciflua</i> <i>Bursaria spinosa</i> <i>Callistemon sieberi</i> <i>Cassinia arcuata</i> <i>Hymenanthera dentata</i> ⚡ <i>Leptospermum continentale</i> <i>L. lanigerum</i>	Varnish Wattle Sweet Bursaria River Bottlebrush Drooping Cassinia Tree Violet ⚡ Prickly Tea-tree Woolly Tea-tree	<i>Acacia acinacea</i> <i>A. paradoxa</i> <i>A. verniciflua</i> <i>Bursaria spinosa</i> <i>Cassinia arcuata</i> <i>Daviesia ulicifolia</i> <i>Hymenanthera dentata</i>	Gold-dust Wattle Hedge Wattle Varnish Wattle Sweet Bursaria Drooping Cassinia Gorse Bitter-pea Tree Violet	<i>Acacia rubida</i> <i>A. verniciflua</i> <i>Bursaria spinosa</i> <i>Cassinia aculeata</i> <i>Daviesia leptophylla</i> <i>Hymenanthera dentata</i>	Red-stem Wattle Varnish Wattle Sweet Bursaria Common Cassinia Narrow-leaf Bitter-pea Tree Violet
SMALL SHRUBS <1m	<i>Goodenia ovata</i>	Hop Goodenia	<i>Acacia lanigera</i> <i>Dillwynia cinerascens</i>	Woolly Wattle Grey Parrot-pea	<i>Acacia aculeatissima</i> <i>Hibbertia obtusifolia</i>	Thin-leaf Wattle Grey Guinea-flower
GROUND COVERS	<i>Carex appressa</i> <i>C. fascicularis</i> <i>Glyceria australis</i> <i>Elymus scaber</i> <i>Lomandra longifolia</i> <i>Microlaena stipoides</i> <i>Phragmites australis</i> <i>Poa ensiformis</i> <i>P. labillardieri</i> <i>Themeda triandra</i>	Tall Sedge Tassel Sedge Australian Sweet-grass Common Wheat-grass Spiny-headed Mat-rush Weeping Grass Common Reed Sword Tussock-grass Common Tussock-grass Kangaroo Grass	<i>Austrodanthonia bipartita</i> s.l <i>Dianella longifolia</i> <i>Elymus scaber</i> <i>Lomandra filiformis</i> <i>L. multiflora</i> <i>Poa morrisii</i> <i>P. sieberiana</i> var. <i>sieberiana</i> <i>Themeda triandra</i>	Leafy Wallaby-grass Pale Flax-lily Common Wheat-grass Wattle Mat-rush Many Flowered Flax-lily Soft Tussock-grass Grey Tussock-grass Kangaroo Grass	<i>Asperula conferta</i> <i>Austrodanthonia caespitosa</i> <i>Dianella longifolia</i> <i>Elymus scaber</i> <i>Glycine clandestina</i> <i>Lomandra filiformis</i> <i>Microlaena stipoides</i> <i>Poa sieberiana</i> var. <i>sieberiana</i> <i>Themeda triandra</i>	Common Woodruff Common Wallaby Grass Pale Flax-lily Common Wheat-grass Twining Glycine Wattle Mat-rush Weeping Grass Grey Tussock-grass Kangaroo Grass

Vegetation Profile for the Marysville (Upper Catchments) Swampy Drainage Lines - Rivers and Streams - Protected Slopes

An Excerpt from the Revegetation Guide for the Goulburn Broken Catchment

Edited by Gill Earl, Fleur Stelling, Mary Titcumb and Sue Berwick.

Department of Natural Resources & Environment

© The State of Victoria, Department of Natural Resources and Environment, 2000 ISBN 0 7311 4731 6

The accompanying sheet is an excerpt from a 400+ page document available on the GBCMA website at <http://www.gbcma.gov.vic.au/revegetation> or on CDROM and in print form available from NRE offices:

Alexandra Benalla
46 Aitken St Sydney Road Complex
Alexandra VIC 3714 Benalla VIC 3672
tel: 03-5772-0200 tel: 03-5761-16110

Tatura Wangaratta
Ferguson Rd 'Tara Court' Ford St
Tatura VIC 3616 Wangaratta VIC 3679
tel: 03-5833-5222 tel: 03-5721-5022

Disclaimer

This guide aims to improve knowledge on the information herein. As such, it is available for use for purposes of study and extension, providing due acknowledgment is given.

The opinions, advice and information contained in this publication have not been provided at the request of any person but are offered by the Department of Natural Resources & Environment solely for information purposes.

While the information contained in this publication has been formulated in good faith, the contents do not take into account all the factors which need to be considered before putting that information into practice. Accordingly, no person should rely on anything contained herein as a substitute for specific advice.

Contents

Foreword	
Acknowledgments	
Dedication	
About the Contributors	
Area covered by the Guide	
Introduction	
Part One	
Chapter 1	The Goulburn Broken Catchment and its vegetation types
Chapter 2	Rare and threatened plants in the Goulburn Broken Catchment
Chapter 3	Interconnections: animals, plants and catchment health
Chapter 4	Environmental weeds in the Goulburn Broken Catchment
Chapter 5	Remnant vegetation - values and threats
Chapter 6	Remnant vegetation, revegetation and farm planning
Chapter 7	Re-establishing native vegetation
Chapter 8	Direct seeding
Chapter 9	Salinity and native vegetation establishment
Chapter 10	Enhancing streams by revegetation and erosion control
Chapter 11	Constructed wetlands
Chapter 12	The economic use of remnant vegetation
Chapter 13	Linking commercial timber production and conservation: an approach to farm forestry
Chapter 14	Analogue forestry: a sustainable production system
Chapter 15	Values of native grasses and pastures on the farm
Chapter 16	Collecting seed from locally native plants
Chapter 17	Propagating locally native plants for revegetation

Practical Information Notes

Understorey
Natural Pest Control
Rural Dieback
Insects and Tree Decline
Mistletoe
Vegetation Management - The Catchment Approach for Landcare Groups
Getting to Know your Local Plants
Revegetation Activity Calendar
Windbreaks
Seedling Quality Tips
Planting Densities for Different Ecosystems

Part Two - Locality Maps & General Native Vegetation Profiles

Choosing the right profile
Index to general native vegetation profiles

Part Three - Plant Descriptions available only in the full print publication

Appendices

1	Rare and threatened plants in the Goulburn Broken Catchment
2	Regionally significant plants in the Goulburn Broken Catchment
3	Environmental weeds in the Goulburn Broken Catchment
4	Wildlife in the Goulburn Broken Catchment
5	Native seed suppliers
6	What to plant and where in wetlands
7	Revegetation costs
8	Regional nurseries supplying locally native plants
9	Further assistance and contacts
10	Native plant field guides

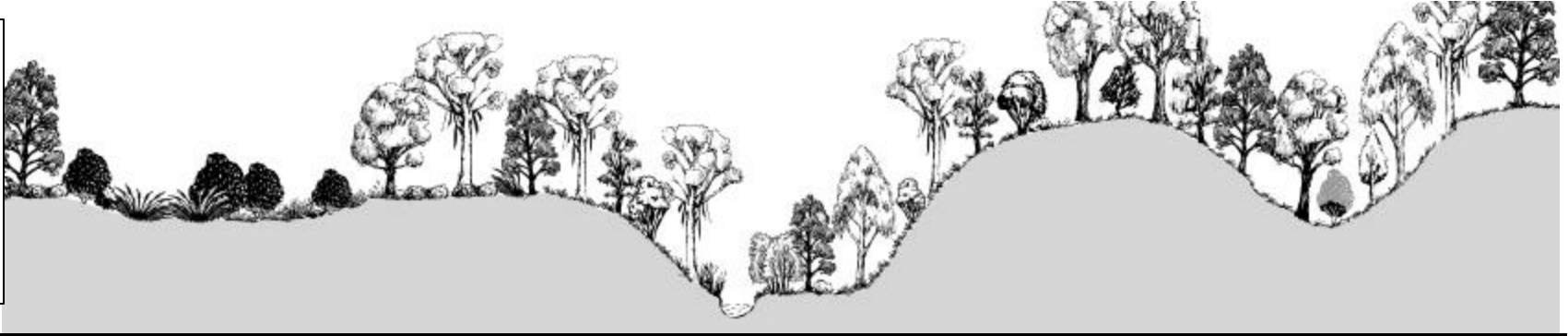
Glossary

Bibliography

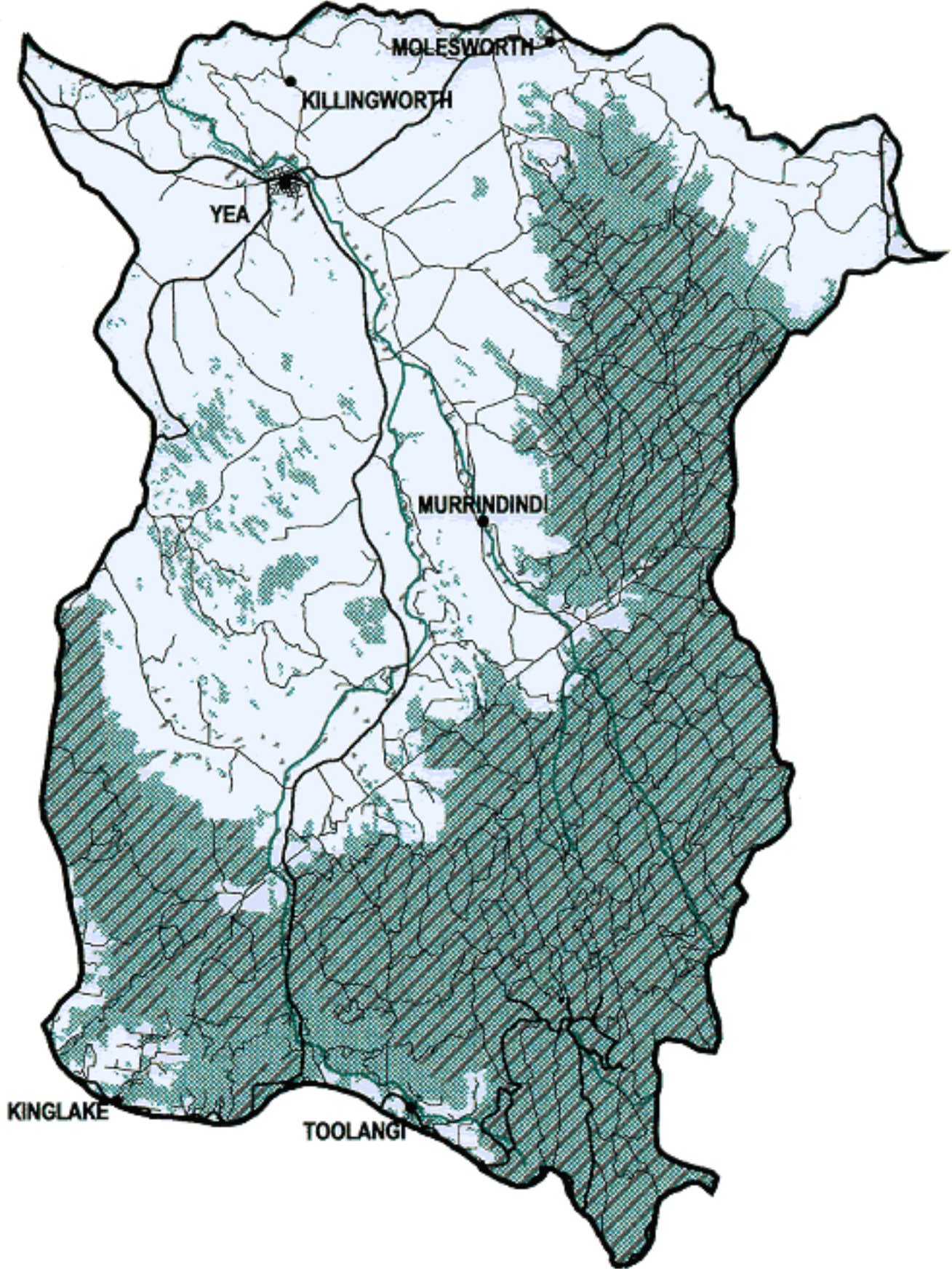
Index available only in the full print publication

MARYSVILLE (UPPER CATCHMENTS) – Swamy Drainage Lines - Rivers and Streams - Protected Slopes

Note: For general re-planting select 30% trees and at least 70% shrubs. If enhancing sites with remnant trees, select shrubs only and allow trees to regenerate. Additions of locally native species for this list are gratefully accepted - contact your local NRE office.



NDFORM	Swamy Drainage Lines		Swift-flowing Rivers and Streams		Protected Upper Slopes, Steep Gullies, Moist Valleys	
EVC	Swamy Riparian Woodland		Riparian Forest		Herb-rich Foothill Forest	
GEOLOGY & SOILS	Variety of soils/geology – sands, silts, loams		Rocky river beds - variety of soils /geology - sands, silts, loams		Range of geology	
DESCRIPTION	Mixed species, riparian woodland in swamps		Blue Gum - Manna Gum tall, riparian forest		Blue Gum - Manna Gum - Peppermint tall, moist forest	
LOCATION EXAMPLE	Swamy river flats adjacent to the Acheron R and Little Stevenson R		Clendale Lane west of Farrers Lane, Taggerty		Farrers Lane, south of Clendale Lane at start of Murrindindi State Forest	
TREES >8m	<i>Acacia dealbata</i> <i>A. melanoxylon</i> <i>Eucalyptus crenulata</i> (e) <i>E. ovata</i> <i>E. viminalis</i>	Silver Wattle Blackwood Buxton Silver Gum (e) Swamp Gum Manna Gum	<i>Acacia dealbata</i> <i>A. melanoxylon</i> <i>Eucalyptus globulus</i> subsp. <i>bicostata</i> <i>E. ovata</i> <i>E. radiata</i> <i>E. rubida</i> <i>E. viminalis</i> <i>Pomaderris aspera</i>	Silver Wattle Blackwood Blue Gum (Eurabbie) Swamp Gum Narrow-leaf Peppermint Candlebark Manna Gum Hazel Pomaderris	<i>Acacia dealbata</i> <i>A. melanoxylon</i> <i>Eucalyptus dives</i> <i>E. globulus</i> subsp. <i>bicostata</i> <i>E. obliqua</i> <i>E. radiata</i> <i>E. rubida</i> <i>E. viminalis</i>	Silver Wattle Blackwood Broad-leaved Peppermint Blue Gum (Eurabbie) Messmate Narrow-leaf Peppermint Candlebark Manna Gum
SHRUBS 1 - 8m ⚡ Poorly drained sites ↑ Upper elevations	<i>Cassinia aculeata</i> <i>C. longifolia</i> <i>Coprosma quadrifida</i> <i>Hymenanthera dentata</i> <i>Leptospermum continentale</i> <i>L. grandifolium</i> <i>L. lanigerum</i>	Common Cassinia Shiny Cassinia Prickly Currant-bush Tree Violet Prickly Tea-tree Mountain Tea-tree Woolly Tea-tree	<i>Coprosma quadrifida</i> <i>Goodenia ovata</i> ⚡ <i>Leptospermum continentale</i> ⚡ <i>L. grandifolium</i> ⚡ <i>L. lanigerum</i> <i>Lomatia myricoides</i> <i>Pimelea axiflora</i> <i>Pomaderris aspera</i> <i>Prostanthera lasianthos</i>	Prickly Currant-bush Hop Goodenia ⚡ Prickly Tea-tree ⚡ Mountain Tea-tree ⚡ Woolly Tea-tree River Lomatia Bootlace Bush Hazel Pomaderris Victorian Christmas-bush	<i>Cassinia aculeata</i> ↑ <i>Coprosma hirtella</i> ↑ <i>C. quadrifida</i> <i>Daviesia latifolia</i> <i>Epacris impressa</i> <i>Pimelea linifolia</i> <i>Pultenaea forsythiana</i> <i>Spyridium parvifolium</i>	Common Cassinia ↑ Rough Coprosma ↑ Prickly Currant-bush Hop Bitter-pea Common Heath Slender Rice-flower Prickly Bush-pea Dusty Miller
SMALL SHRUBS <1m	<i>Goodenia ovata</i>	Hop Goodenia	<i>Leucopogon hookeri</i>	Mountain Beard-heath	<i>Leucopogon hookeri</i> <i>Tetradlea ciliata</i>	Mountain Beard-heath Pink-bells
GROUND COVERS	<i>Blechnum nudum</i> <i>B. minus</i> <i>Carex appressa</i> <i>C. fascicularis</i> <i>Clematis aristata</i> <i>Cyperus lucidus</i> <i>Lepidosperma elatius</i> <i>Microlaena stipoides</i> <i>Poa ensiformis</i> <i>Polystichum proliferum</i>	Fishbone Water-fern Soft Water-fern Tall Sedge Tassel Sedge Mountain Clematis Leafy Flat-sedge Tall Sword-sedge Weeping Grass Sword Tussock-grass Mother Shield-fern	<i>Blechnum nudum</i> <i>Carex appressa</i> <i>C. fascicularis</i> <i>Cyperus lucidus</i> <i>Dianella tasmanica</i> <i>Echinopogon ovatus</i> <i>Lomandra longifolia</i> <i>Microlaena stipoides</i> <i>Poa ensiformis</i> <i>Viola hederacea</i>	Fishbone Water-fern Tall Sedge Tassel Sedge Leafy Flat-sedge Tasman Flax-lily Common Hedgehog-grass Spiny-headed Mat-rush Weeping Grass Sword Tussock-grass Ivy-leaf Violet	<i>Acrotriche serrulata</i> <i>Billardiera scandens</i> <i>Clematis aristata</i> <i>Echinopogon ovatus</i> <i>Elymus scaber</i> <i>Lomandra longifolia</i> <i>Microlaena stipoides</i> <i>Platylobium formosum</i> <i>Poa ensiformis</i>	Honey-pots Common Apple-berry Mountain Clematis Common Hedgehog-grass Common Wheat-grass Spiny-headed Mat-rush Weeping Grass Handsome Flat-pea Sword Tussock-grass



Vegetation Profile for the Yea Valleys and Low Hills - Dry Slopes and Ridges - Protected Upper Slopes and Valleys

An Excerpt from the Revegetation Guide for the Goulburn Broken Catchment

Edited by Gill Earl, Fleur Stelling, Mary Titcumb and Sue Berwick.

Department of Natural Resources & Environment

© The State of Victoria, Department of Natural Resources and Environment, 2000 ISBN 0 7311 4731 6

The accompanying sheet is an excerpt from a 400+ page document available on the GBCMA website at <http://www.gbcma.gov.vic.au/revegetation> or on CDROM and in print form available from NRE offices:

Alexandra Benalla
46 Aitken St Sydney Road Complex
Alexandra VIC 3714 Benalla VIC 3672
tel: 03-5772-0200 tel: 03-5761-16110

Tatura Wangaratta
Ferguson Rd 'Tara Court' Ford St
Tatura VIC 3616 Wangaratta VIC 3679
tel: 03-5833-5222 tel: 03-5721-5022

Disclaimer

This guide aims to improve knowledge on the information herein. As such, it is available for use for purposes of study and extension, providing due acknowledgment is given.

The opinions, advice and information contained in this publication have not been provided at the request of any person but are offered by the Department of Natural Resources & Environment solely for information purposes.

While the information contained in this publication has been formulated in good faith, the contents do not take into account all the factors which need to be considered before putting that information into practice. Accordingly, no person should rely on anything contained herein as a substitute for specific advice.

Contents

Foreword	
Acknowledgments	
Dedication	
About the Contributors	
Area covered by the Guide	
Introduction	
Part One	
Chapter 1	The Goulburn Broken Catchment and its vegetation types
Chapter 2	Rare and threatened plants in the Goulburn Broken Catchment
Chapter 3	Interconnections: animals, plants and catchment health
Chapter 4	Environmental weeds in the Goulburn Broken Catchment
Chapter 5	Remnant vegetation - values and threats
Chapter 6	Remnant vegetation, revegetation and farm planning
Chapter 7	Re-establishing native vegetation
Chapter 8	Direct seeding
Chapter 9	Salinity and native vegetation establishment
Chapter 10	Enhancing streams by revegetation and erosion control
Chapter 11	Constructed wetlands
Chapter 12	The economic use of remnant vegetation
Chapter 13	Linking commercial timber production and conservation: an approach to farm forestry
Chapter 14	Analogue forestry: a sustainable production system
Chapter 15	Values of native grasses and pastures on the farm
Chapter 16	Collecting seed from locally native plants
Chapter 17	Propagating locally native plants for revegetation

Practical Information Notes

Understorey
Natural Pest Control
Rural Dieback
Insects and Tree Decline
Mistletoe
Vegetation Management - The Catchment Approach for Landcare Groups
Getting to Know your Local Plants
Revegetation Activity Calendar
Windbreaks
Seedling Quality Tips
Planting Densities for Different Ecosystems

Part Two - Locality Maps & General Native Vegetation Profiles

Choosing the right profile
Index to general native vegetation profiles

Part Three - Plant Descriptions available only in the full print publication

Appendices

1	Rare and threatened plants in the Goulburn Broken Catchment
2	Regionally significant plants in the Goulburn Broken Catchment
3	Environmental weeds in the Goulburn Broken Catchment
4	Wildlife in the Goulburn Broken Catchment
5	Native seed suppliers
6	What to plant and where in wetlands
7	Revegetation costs
8	Regional nurseries supplying locally native plants
9	Further assistance and contacts
10	Native plant field guides

Glossary

Bibliography

Index available only in the full print publication

YEA – Valleys and Low Hills - Dry Slopes and Ridges - Protected Upper Slopes and Valleys

Note: For general re-planting select 30% trees and at least 70% shrubs. If enhancing sites with remnant trees, select shrubs only and allow trees to regenerate. Additions of locally native species for this list are gratefully accepted - contact your local NRE office.



LANDFORM	Valleys and Low Hills		Dry Slopes and Ridges		Protected Upper Slopes, Steep Gullies, Moist Valleys	
EVC	Grassy Woodland/Valley Grassy Forest		Grassy Dry Forest		Herb-rich Foothill Forest	
GEOLOGY & SOILS	Fertile, well drained, reasonable water availability		Variety of geologies; well drained soils, often skeletal and rocky		Variety of geologies ; moist, fertile soils.	
DESCRIPTION	Mixed species shrubby-grassy woodland		Box - Stringybark dry grassy-shrubby woodland		Blue Gum - Peppermint shrubby, moist tall forest	
LOCATION EXAMPLE	South side of Goulburn Valley Hwy, c 0.4 km south of Killingworth Rd; Disturbed areas around Allandale Rd, south of Strath Creek		Spur Rd, c 0.8 km north of Whittlesea Yea Rd; Minto Spur Rd, first 3 km west of Whittlesea - Yea Rd		Whittlesea Yea Rd, south of Minto Spur Rd Whittlesea Yea Rd, c 0.6 km south of Spring Valley Rd	
TREES >8m ♣ Wetter sites ↑ Upper elevations	<ul style="list-style-type: none"> ♣ <i>Acacia dealbata</i> ♣ <i>A. melanoxylon</i> <i>Eucalyptus macrorhyncha</i> <i>E. microcarpa</i> <i>E. polyanthemos</i> <i>E. rubida</i> <i>Exocarpos cupressiformis</i> 	<ul style="list-style-type: none"> ♣ Silver Wattle ♣ Blackwood Red Stringybark Grey Box Red Box Candlebark Cherry Ballart 	<ul style="list-style-type: none"> <i>Acacia implexa</i> <i>Eucalyptus dives</i> <i>E. macrorhyncha</i> <i>E. obliqua</i> <i>E. polyanthemos</i> <i>E. rubida</i> 	<ul style="list-style-type: none"> Lightwood Broad-leaved Peppermint Red Stringybark Messmate Red Box Candlebark 	<ul style="list-style-type: none"> <i>Acacia dealbata</i> <i>A. melanoxylon</i> <i>Eucalyptus dives</i> <i>E. globulus</i> subsp. <i>bicostata</i> <i>E. obliqua</i> <i>E. rubida</i> ↑ <i>Pomaderris aspera</i> 	<ul style="list-style-type: none"> Silver Wattle Blackwood Broad-leaved Peppermint Blue Gum (Eurabbie) Messmate Candlebark ↑ Hazel Pomaderris
SHRUBS 1 - 8m ⌘ Poorly drained sites ↑ Upper elevations	<ul style="list-style-type: none"> <i>Bursaria spinosa</i> <i>Cassinia aculeata</i> <i>C. longifolia</i> <i>Hymenanthera dentata</i> ⌘ <i>Leptospermum continentale</i> <i>Pimelea linifolia</i> 	<ul style="list-style-type: none"> Sweet Bursaria Common Cassinia Shiny Cassinia Tree Violet ⌘ Prickly Tea-tree Slender Rice-flower 	<ul style="list-style-type: none"> <i>Acacia paradoxa</i> <i>A. verniciflua</i> <i>Bursaria spinosa</i> <i>Cassinia aculeata</i> <i>Daviesia leptophylla</i> <i>Dillwynia juniperina</i> <i>Grevillea alpina</i> <i>Pimelea linifolia</i> 	<ul style="list-style-type: none"> Hedge Wattle Varnish Wattle Sweet Bursaria Common Cassinia Narrow-leaf Bitter-pea Prickly Parrot-pea Cat's Claw Grevillea Slender Rice-flower 	<ul style="list-style-type: none"> <i>Cassinia aculeata</i> ↑ <i>Coprosma hirtella</i> <i>Daviesia latifolia</i> <i>Epacris impressa</i> <i>Indigofera australis</i> <i>Pimelea linifolia</i> ↑ <i>Polyscias sambucifolia</i> <i>Pultenaea forsythiana</i> <i>Spyridium parvifolium</i> 	<ul style="list-style-type: none"> Common Cassinia ↑ Rough Coprosma Hop Bitter-pea Common Heath Austral Indigo Slender Rice-flower ↑ Elderberry Panax Prickly Bush-pea Dusty Miller
SMALL SHRUBS <1m	<ul style="list-style-type: none"> <i>Hibbertia obtusifolia</i> <i>Hovea linearis</i> <i>Pimelea humilis</i> 	<ul style="list-style-type: none"> Grey Guinea-flower Common Hovea Common Rice-flower 	<ul style="list-style-type: none"> <i>Hibbertia obtusifolia</i> <i>Tetratheca ciliata</i> 	<ul style="list-style-type: none"> Grey Guinea-flower Pink-bells 	<ul style="list-style-type: none"> <i>Hibbertia obtusifolia</i> <i>Pimelea humilis</i> <i>Tetratheca ciliata</i> 	<ul style="list-style-type: none"> Grey Guinea-flower Common Rice-flower Pink-bells
GROUND COVERS	<ul style="list-style-type: none"> <i>Acrotiche prostrata</i> <i>Arthropodium strictum</i> <i>Austrodanthonia pilosa</i> <i>Elymus scaber</i> <i>Glycine clandestina</i> <i>Poa sieberiana</i> var. <i>sieberiana</i> <i>Themeda triandra</i> 	<ul style="list-style-type: none"> Trailing Ground-berry Chocolate Lily Velvet Wallaby-grass Common Wheat-grass Twining Glycine Grey Tussock-grass Kangaroo Grass 	<ul style="list-style-type: none"> <i>Arthropodium strictum</i> <i>Austrodanthonia pilosa</i> <i>Elymus scaber</i> <i>Glycine clandestina</i> <i>Joycea pallida</i> <i>Poa sieberiana</i> var. <i>sieberiana</i> <i>Themeda triandra</i> 	<ul style="list-style-type: none"> Chocolate Lily Velvet Wallaby-grass Common Wheat-grass Twining Glycine Silver-top Wallaby-grass Grey Tussock-grass Kangaroo Grass 	<ul style="list-style-type: none"> <i>Ajuga australis</i> <i>Dianella tasmanica</i> <i>Glycine clandestina</i> <i>Lomandra longifolia</i> <i>Platylobium formosum</i> <i>Poa sieberiana</i> var. <i>sieberiana</i> <i>Stylidium graminifolium</i> 	<ul style="list-style-type: none"> Austral Bugle Tasman Flax-lily Twining Glycine Spiny-headed Mat-rush Handsome Flat-pea Grey Tussock-grass Grass Trigger-plant

Vegetation Profile for the Yea (Lower Catchments) Creeklines and Rivers - Plains - Valleys and Low Hills

An Excerpt from the Revegetation Guide for the Goulburn Broken Catchment

Edited by Gill Earl, Fleur Stelling, Mary Titcumb and Sue Berwick.

Department of Natural Resources & Environment

© The State of Victoria, Department of Natural Resources and Environment, 2000 ISBN 0 7311 4731 6

The accompanying sheet is an excerpt from a 400+ page document available on the GBCMA website at <http://www.gbcma.gov.vic.au/revegetation> or on CDROM and in print form available from NRE offices:

Alexandra Benalla
46 Aitken St Sydney Road Complex
Alexandra VIC 3714 Benalla VIC 3672
tel: 03-5772-0200 tel: 03-5761-16110

Tatura Wangaratta
Ferguson Rd 'Tara Court' Ford St
Tatura VIC 3616 Wangaratta VIC 3679
tel: 03-5833-5222 tel: 03-5721-5022

Disclaimer

This guide aims to improve knowledge on the information herein. As such, it is available for use for purposes of study and extension, providing due acknowledgment is given.

The opinions, advice and information contained in this publication have not been provided at the request of any person but are offered by the Department of Natural Resources & Environment solely for information purposes.

While the information contained in this publication has been formulated in good faith, the contents do not take into account all the factors which need to be considered before putting that information into practice. Accordingly, no person should rely on anything contained herein as a substitute for specific advice.

Contents

Foreword	
Acknowledgments	
Dedication	
About the Contributors	
Area covered by the Guide	
Introduction	
Part One	
Chapter 1	The Goulburn Broken Catchment and its vegetation types
Chapter 2	Rare and threatened plants in the Goulburn Broken Catchment
Chapter 3	Interconnections: animals, plants and catchment health
Chapter 4	Environmental weeds in the Goulburn Broken Catchment
Chapter 5	Remnant vegetation - values and threats
Chapter 6	Remnant vegetation, revegetation and farm planning
Chapter 7	Re-establishing native vegetation
Chapter 8	Direct seeding
Chapter 9	Salinity and native vegetation establishment
Chapter 10	Enhancing streams by revegetation and erosion control
Chapter 11	Constructed wetlands
Chapter 12	The economic use of remnant vegetation
Chapter 13	Linking commercial timber production and conservation: an approach to farm forestry
Chapter 14	Analogue forestry: a sustainable production system
Chapter 15	Values of native grasses and pastures on the farm
Chapter 16	Collecting seed from locally native plants
Chapter 17	Propagating locally native plants for revegetation

Practical Information Notes

Understorey
Natural Pest Control
Rural Dieback
Insects and Tree Decline
Mistletoe
Vegetation Management - The Catchment Approach for Landcare Groups
Getting to Know your Local Plants
Revegetation Activity Calendar
Windbreaks
Seedling Quality Tips
Planting Densities for Different Ecosystems

Part Two - Locality Maps & General Native Vegetation Profiles

Choosing the right profile
Index to general native vegetation profiles

Part Three - Plant Descriptions available only in the full print publication

Appendices

1	Rare and threatened plants in the Goulburn Broken Catchment
2	Regionally significant plants in the Goulburn Broken Catchment
3	Environmental weeds in the Goulburn Broken Catchment
4	Wildlife in the Goulburn Broken Catchment
5	Native seed suppliers
6	What to plant and where in wetlands
7	Revegetation costs
8	Regional nurseries supplying locally native plants
9	Further assistance and contacts
10	Native plant field guides

Glossary

Bibliography

Index available only in the full print publication

YEA (LOWER CATCHMENTS) – Creeklines and Rivers - Plains - Valleys and Low Hills

Note: For general re-planting select 30% trees and at least 70% shrubs. If enhancing sites with remnant trees, select shrubs only and allow trees to regenerate. Additions of locally native species for this list are gratefully accepted - contact your local NRE office.



LANDFORM	Creeklines, Rivers and Floodplains		Plains		Valleys and Low Hills	
EVC	Creekline Grassy Woodland/Floodplain Riparian Woodland		Plains Grassy Woodland		Grassy Woodland/Valley Grassy Forest	
GEOLOGY & SOILS	Alluvium - clays, silts and sands		Colluvium – loams, clays, silts and sands		Fertile, well drained, reasonable water availability	
DESCRIPTION	Creekbanks and adjacent floodplains		Grey Box and Red Gum grassy woodland		Mixed species shrubby-grassy woodland	
LOCATION	No intact examples known;		Disturbed examples only;		South side of Goulburn Valley Hwy, c 0.4 km south of Killingworth Rd;	
EXAMPLE	Frontage along the Goulburn and Murrindindi Rivers		Tea Tree Rd, Flathead Lane, Dairy Creek Rd, Clark Rd (first 3 km)		Disturbed areas around Allandale Rd, south of Strath Creek	
TREES >8m ⇔ On adjacent flats ⚡ Poorly drained sites 💧 Wetter sites	<i>Eucalyptus camaldulensis</i> ⇔ <i>E. melliodora</i> ⇔ <i>E. microcarpa</i> ⚡ <i>E. ovata</i>	River Red Gum ⇔ Yellow Box ⇔ Grey Box ⚡ Swamp Gum	<i>Acacia mearnsii</i> <i>A. melanoxylon</i> <i>Eucalyptus camaldulensis</i> <i>E. melliodora</i>	Black Wattle Blackwood River Red Gum Yellow Box	◆ <i>Acacia dealbata</i> ◆ <i>A. melanoxylon</i> <i>Eucalyptus macrorhyncha</i> <i>E. microcarpa</i> <i>E. polyanthemos</i> <i>E. rubida</i> <i>Exocarpos cupressiformis</i>	◆ Silver Wattle ◆ Blackwood Red Stringybark Grey Box Red Box Candlebark Cherry Ballart
SHRUBS 1 - 8m ⚡ Poorly drained sites	<i>Acacia verniciflua</i> <i>Bursaria spinosa</i> <i>Callistemon sieberi</i> <i>Cassinia arcuata</i> <i>Hymenanthera dentata</i> ⚡ <i>Leptospermum continentale</i> <i>L. lanigerum</i> <i>Melaleuca parvistaminea</i>	Varnish Wattle Sweet Bursaria River Bottlebrush Drooping Cassinia Tree Violet ⚡ Prickly Tea-tree Woolly Tea-tree Rough-barked Honey-myrtle	<i>Acacia lanigera</i> <i>A. paradoxa</i> <i>A. pycnantha</i> <i>A. verniciflua</i> <i>Bursaria spinosa</i> <i>Cassinia arcuata</i> <i>Daviesia ulicifolia</i> <i>Hymenanthera dentata</i>	Woolly Wattle Hedge Wattle Golden Wattle Varnish Wattle Sweet Bursaria Drooping Cassinia Gorse Bitter-pea Tree Violet	<i>Bursaria spinosa</i> <i>Cassinia aculeata</i> <i>C. longifolia</i> <i>Hymenanthera dentata</i> ⚡ <i>Leptospermum continentale</i> <i>Pimelea linifolia</i>	Sweet Bursaria Common Cassinia Shiny Cassinia Tree Violet ⚡ Prickly Tea-tree Slender Rice-flower
SMALL SHRUBS <1m	<i>Goodenia ovata</i>	Hop Goodenia			<i>Hibbertia obtusifolia</i> <i>Pimelea humilis</i>	Grey Guinea-flower Common Rice-flower
GROUND COVERS	<i>Carex appressa</i> <i>C. fascicularis</i> <i>Elymus scaber</i> <i>Glyceria australis</i> <i>Lomandra longifolia</i> <i>Lythrum salicaria</i> <i>Microlaena stipoides</i> <i>Poa labillardieri</i> <i>Themeda triandra</i>	Tall Sedge Tassel Sedge Common Wheat-grass Australian Sweet-grass Spiny-headed Mat-rush Purple Loosetife Weeping Grass Common Tussock-grass Kangaroo Grass	<i>Carex appressa</i> <i>C. tereticaulis</i> <i>Dianella revoluta</i> <i>Elymus scaber</i> <i>Lomandra filiformis</i> <i>Poa morrisii</i> <i>P. sieberiana</i> var. <i>sieberiana</i> <i>Themeda triandra</i>	Tall Sedge Rush Sedge Black-anther Flax-lily Common Wheat-grass Wattle Mat-rush Soft Tussock-grass Grey Tussock-grass Kangaroo Grass	<i>Acrotiche prostrata</i> <i>Arthropodium strictum</i> <i>Austrodanthonia pilosa</i> <i>Elymus scaber</i> <i>Glycine clandestina</i> <i>Poa sieberiana</i> var. <i>sieberiana</i> <i>Schoenus apogon</i> <i>Themeda triandra</i>	Trailing Ground-berry Chocolate Lily Velvet Wallaby-grass Common Wheat-grass Twining Glycine Grey Tussock-grass Common Bog-sedge Kangaroo Grass

Vegetation Profile for the Yea (Upper Catchments) Valleys and Low Hills - Moist Valleys - Rivers and Streams

An Excerpt from the Revegetation Guide for the Goulburn Broken Catchment

Edited by Gill Earl, Fleur Stelling, Mary Titcumb and Sue Berwick.

Department of Natural Resources & Environment

© The State of Victoria, Department of Natural Resources and Environment, 2000 ISBN 0 7311 4731 6

The accompanying sheet is an excerpt from a 400+ page document available on the GBCMA website at <http://www.gbcma.gov.vic.au/revegetation> or on CDROM and in print form available from NRE offices:

Alexandra Benalla
46 Aitken St Sydney Road Complex
Alexandra VIC 3714 Benalla VIC 3672
tel: 03-5772-0200 tel: 03-5761-16110

Tatura Wangaratta
Ferguson Rd 'Tara Court' Ford St
Tatura VIC 3616 Wangaratta VIC 3679
tel: 03-5833-5222 tel: 03-5721-5022

Disclaimer

This guide aims to improve knowledge on the information herein. As such, it is available for use for purposes of study and extension, providing due acknowledgment is given.

The opinions, advice and information contained in this publication have not been provided at the request of any person but are offered by the Department of Natural Resources & Environment solely for information purposes.

While the information contained in this publication has been formulated in good faith, the contents do not take into account all the factors which need to be considered before putting that information into practice. Accordingly, no person should rely on anything contained herein as a substitute for specific advice.

Contents

Foreword	
Acknowledgments	
Dedication	
About the Contributors	
Area covered by the Guide	
Introduction	
Part One	
Chapter 1	The Goulburn Broken Catchment and its vegetation types
Chapter 2	Rare and threatened plants in the Goulburn Broken Catchment
Chapter 3	Interconnections: animals, plants and catchment health
Chapter 4	Environmental weeds in the Goulburn Broken Catchment
Chapter 5	Remnant vegetation - values and threats
Chapter 6	Remnant vegetation, revegetation and farm planning
Chapter 7	Re-establishing native vegetation
Chapter 8	Direct seeding
Chapter 9	Salinity and native vegetation establishment
Chapter 10	Enhancing streams by revegetation and erosion control
Chapter 11	Constructed wetlands
Chapter 12	The economic use of remnant vegetation
Chapter 13	Linking commercial timber production and conservation: an approach to farm forestry
Chapter 14	Analogue forestry: a sustainable production system
Chapter 15	Values of native grasses and pastures on the farm
Chapter 16	Collecting seed from locally native plants
Chapter 17	Propagating locally native plants for revegetation

Practical Information Notes

Understorey
Natural Pest Control
Rural Dieback
Insects and Tree Decline
Mistletoe
Vegetation Management - The Catchment Approach for Landcare Groups
Getting to Know your Local Plants
Revegetation Activity Calendar
Windbreaks
Seedling Quality Tips
Planting Densities for Different Ecosystems

Part Two - Locality Maps & General Native Vegetation Profiles

Choosing the right profile
Index to general native vegetation profiles

Part Three - Plant Descriptions available only in the full print publication

Appendices

1	Rare and threatened plants in the Goulburn Broken Catchment
2	Regionally significant plants in the Goulburn Broken Catchment
3	Environmental weeds in the Goulburn Broken Catchment
4	Wildlife in the Goulburn Broken Catchment
5	Native seed suppliers
6	What to plant and where in wetlands
7	Revegetation costs
8	Regional nurseries supplying locally native plants
9	Further assistance and contacts
10	Native plant field guides

Glossary

Bibliography

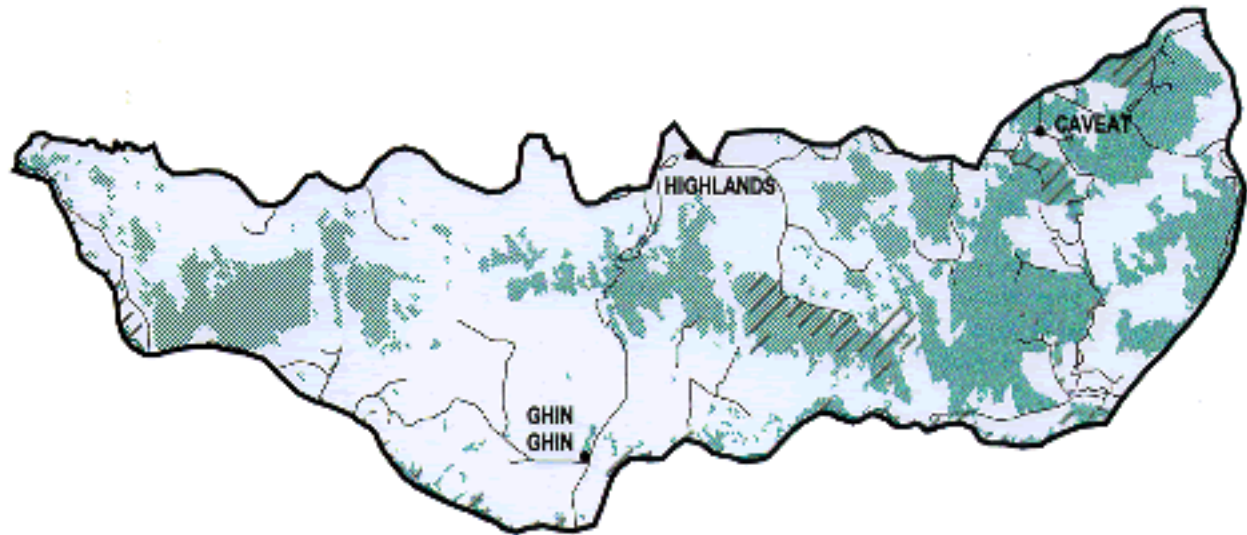
Index available only in the full print publication

YEA (UPPER CATCHMENTS) – Valleys and Low Hills - Moist Valleys - Rivers and Streams

Note: For general re-planting select 30% trees and at least 70% shrubs. If enhancing sites with remnant trees, select shrubs only and allow trees to regenerate. Additions of locally native species for this list are gratefully accepted - contact your local NRE office.



LANDFORM	Valleys and Low Hills		Protected Upper Slopes, Moist Gullies, Steep Valleys		Swift-flowing Streams and Rivers	
EVC	Grassy Woodland/Valley Grassy Forest		Herb-rich Foothill Forest		Riparian Forest	
GEOLOGY & SOILS	Fertile, well drained soils, reasonable water availability		Range of geology ; moist, fertile soils.		Often rocky river beds with range of geology – sands, silts and loams	
DESCRIPTION	Mixed species shrubby-grassy woodland		Blue Gum - Peppermint shrubby, moist tall forest		Taller riparian forests in higher rainfall areas	
LOCATION EXAMPLE	South side of Goulburn Valley Hwy, c 0.4 km south of Killingworth Rd; Disturbed areas around Allandale Rd, south of Strath Creek		Whittlesea Yea Rd - south of Minto Spur Rd; Whittlesea Yea Rd, c 0.6 km south of Tea Tree Rd		Tributary of King Parrot Ck at Spring Valley Rd, c 0.2 km north of King Parrot Rd intersection	
TREES >8m ♦ Wetter sites ↑ Upper elevations	<ul style="list-style-type: none"> ♦ <i>Acacia dealbata</i> ♦ <i>A. melanoxylon</i> <i>Eucalyptus macrorhyncha</i> <i>E. microcarpa</i> <i>E. polyanthemos</i> <i>E. rubida</i> <i>Exocarpos cupressiformis</i> 	<ul style="list-style-type: none"> ♦ Silver Wattle ♦ Blackwood Red Stringybark Grey Box Red Box Candlebark Cherry Ballart 	<ul style="list-style-type: none"> <i>Acacia dealbata</i> <i>A. melanoxylon</i> <i>Eucalyptus dives</i> <i>E. globulus</i> subsp. <i>bicostata</i> <i>E. obliqua</i> <i>E. rubida</i> <i>Pomaderris aspera</i> 	<ul style="list-style-type: none"> Silver Wattle Blackwood Broad-leaved Peppermint Blue Gum (Eurabbie) Messmate Candlebark Hazel Pomaderris 	<ul style="list-style-type: none"> <i>Acacia dealbata</i> <i>A. melanoxylon</i> <i>Eucalyptus globulus</i> subsp. <i>bicostata</i> <i>E. viminalis</i> ↑ <i>Pomaderris aspera</i> 	<ul style="list-style-type: none"> Silver Wattle Blackwood Blue Gum (Eurabbie) Manna Gum ↑ Hazel Pomaderris
SHRUBS 1 - 8m ⚡ Poorly drained sites ↑ Upper elevations	<ul style="list-style-type: none"> <i>Bursaria spinosa</i> <i>Cassinia aculeata</i> <i>C. longifolia</i> <i>Hymenanthera dentata</i> ⚡ <i>Leptospermum continentale</i> <i>Pimelea linifolia</i> 	<ul style="list-style-type: none"> Sweet Bursaria Common Cassinia Shiny Cassinia Tree Violet ⚡ Prickly Tea-tree Slender Rice-flower 	<ul style="list-style-type: none"> <i>Cassinia aculeata</i> ↑ <i>Coprosma hirtella</i> <i>Epacris impressa</i> <i>Indigofera australis</i> <i>Mirbelia oxyllobodes</i> <i>Pimelea linifolia</i> ↑ <i>Polyscias sambucifolia</i> <i>Pultenaea forsythiana</i> <i>Spyridium parvifolium</i> 	<ul style="list-style-type: none"> Common Cassinia ↑ Rough Coprosma Common Heath Austral Indigo Mountain Mirbelia Slender Rice-flower ↑ Elderberry Panax Prickly Bush-pea Dusty Miller 	<ul style="list-style-type: none"> <i>Bursaria spinosa</i> ↑ <i>Coprosma quadrifida</i> ↑ <i>Correa lawrenciana</i> <i>Gynatrix pulchella</i> ↑ <i>Hedycarya angustifolia</i> ↑ <i>Leptospermum grandifolium</i> ↑ <i>Pimelea axiflora</i> <i>Prostranthera lasianthos</i> <i>Spyridium parvifolium</i> 	<ul style="list-style-type: none"> Sweet Bursaria ↑ Prickly Currant-bush ↑ Mountain Correa Hemp Bush ↑ Austral Mulberry ↑ Mountain Tea-tree ↑ Bootlace Bush Victorian Christmas-bush Dusty Miller
SMALL SHRUBS <1m	<ul style="list-style-type: none"> <i>Hibbertia obtusifolia</i> <i>Hovea linearis</i> <i>Pimelea humilis</i> 	<ul style="list-style-type: none"> Grey Guinea-flower Common Hovea Common Rice-flower 	<ul style="list-style-type: none"> <i>Hibbertia obtusifolia</i> <i>Pimelea humilis</i> <i>Petratheca ciliata</i> 	<ul style="list-style-type: none"> Grey Guinea-flower Common Rice-flower Pink-bells 	<ul style="list-style-type: none"> <i>Goodenia ovata</i> 	<ul style="list-style-type: none"> Hop Goodenia
GROUND COVERS	<ul style="list-style-type: none"> <i>Acrotiche prostrata</i> <i>Arthropodium strictum</i> <i>Austrodanthonia pilosa</i> <i>Elymus scaber</i> <i>Glycine clandestina</i> <i>Poa sieberiana</i> var. <i>sieberiana</i> <i>Themeda triandra</i> 	<ul style="list-style-type: none"> Trailing Ground-berry Chocolate Lily Velvet Wallaby-grass Common Wheat-grass Twining Glycine Grey Tussock-grass Kangaroo Grass 	<ul style="list-style-type: none"> <i>Ajuga australis</i> <i>Billardiera scandens</i> <i>Dianella tasmanica</i> <i>Glycine clandestina</i> <i>Lomandra longifolia</i> <i>Microlaena stipoides</i> <i>Platylobium formosum</i> <i>Poa sieberiana</i> var. <i>sieberiana</i> <i>Styliidium graminifolium</i> 	<ul style="list-style-type: none"> Austral Bugle Common Apple-berry Tasman Flax-lily Twining Glycine Spiny-headed Mat-rush Weeping Grass Handsome Flat-pea Grey Tussock-grass Grass Trigger-plant 	<ul style="list-style-type: none"> <i>Blechnum nudum</i> <i>B. watsii</i> <i>Carex appressa</i> <i>C. fascicularis</i> <i>Dianella tasmanica</i> <i>Mentha laxiflora</i> <i>Poa ensiformis</i> <i>Stellaria flaccida</i> <i>Viola hederacea</i> 	<ul style="list-style-type: none"> Fishbone Water-fern Hard Water-fern Tall Sedge Tassel Sedge Tasman Flax-lily Forest Mint Sword Tussock-grass Forest Starwort Ivy-leaf Violet



Vegetation Profile for the Ghin Ghin Dry Slopes and Ridges - Protected Slopes and Plateaux – Rivers and Streams

An Excerpt from the Revegetation Guide for the Goulburn Broken Catchment

Edited by Gill Earl, Fleur Stelling, Mary Titcumb and Sue Berwick.

Department of Natural Resources & Environment

© The State of Victoria, Department of Natural Resources and Environment, 2000 ISBN 0 7311 4731 6

The accompanying sheet is an excerpt from a 400+ page document available on the GBCMA website at <http://www.gbcma.gov.vic.au/revegetation> or on CDROM and in print form available from NRE offices:

Alexandra Benalla
46 Aitken St Sydney Road Complex
Alexandra VIC 3714 Benalla VIC 3672
tel: 03-5772-0200 tel: 03-5761-16110

Tatura Wangaratta
Ferguson Rd 'Tara Court' Ford St
Tatura VIC 3616 Wangaratta VIC 3679
tel: 03-5833-5222 tel: 03-5721-5022

Disclaimer

This guide aims to improve knowledge on the information herein. As such, it is available for use for purposes of study and extension, providing due acknowledgment is given.

The opinions, advice and information contained in this publication have not been provided at the request of any person but are offered by the Department of Natural Resources & Environment solely for information purposes.

While the information contained in this publication has been formulated in good faith, the contents do not take into account all the factors which need to be considered before putting that information into practice. Accordingly, no person should rely on anything contained herein as a substitute for specific advice.

Contents

Foreword	
Acknowledgments	
Dedication	
About the Contributors	
Area covered by the Guide	
Introduction	
Part One	
Chapter 1	The Goulburn Broken Catchment and its vegetation types
Chapter 2	Rare and threatened plants in the Goulburn Broken Catchment
Chapter 3	Interconnections: animals, plants and catchment health
Chapter 4	Environmental weeds in the Goulburn Broken Catchment
Chapter 5	Remnant vegetation - values and threats
Chapter 6	Remnant vegetation, revegetation and farm planning
Chapter 7	Re-establishing native vegetation
Chapter 8	Direct seeding
Chapter 9	Salinity and native vegetation establishment
Chapter 10	Enhancing streams by revegetation and erosion control
Chapter 11	Constructed wetlands
Chapter 12	The economic use of remnant vegetation
Chapter 13	Linking commercial timber production and conservation: an approach to farm forestry
Chapter 14	Analogue forestry: a sustainable production system
Chapter 15	Values of native grasses and pastures on the farm
Chapter 16	Collecting seed from locally native plants
Chapter 17	Propagating locally native plants for revegetation

Practical Information Notes

Understorey
Natural Pest Control
Rural Dieback
Insects and Tree Decline
Mistletoe
Vegetation Management - The Catchment Approach for Landcare Groups
Getting to Know your Local Plants
Revegetation Activity Calendar
Windbreaks
Seedling Quality Tips
Planting Densities for Different Ecosystems

Part Two - Locality Maps & General Native Vegetation Profiles

Choosing the right profile
Index to general native vegetation profiles

Part Three - Plant Descriptions available only in the full print publication

Appendices

1	Rare and threatened plants in the Goulburn Broken Catchment
2	Regionally significant plants in the Goulburn Broken Catchment
3	Environmental weeds in the Goulburn Broken Catchment
4	Wildlife in the Goulburn Broken Catchment
5	Native seed suppliers
6	What to plant and where in wetlands
7	Revegetation costs
8	Regional nurseries supplying locally native plants
9	Further assistance and contacts
10	Native plant field guides

Glossary

Bibliography

Index available only in the full print publication

GHIN GHIN – Dry Slopes and Ridges - Protected Slopes and Plateaux – Rivers and Streams

Note: For general re-planting select 30% trees and at least 70% shrubs. If enhancing sites with remnant trees, select shrubs only and allow trees to regenerate. Additions of locally native species for this list are gratefully accepted - contact your local NRE office.



LANDFORM	Dry Slopes and Ridges		Protected Upper Slopes, Steep Gullies and Plateaux		Swift-flowing Streams and Rivers	
EVC	Grassy Dry Forest		Herb-rich Foothill Forest/Damp Forest		Riparian Forest/Swampy Riparian Woodland	
GEOLOGY & SOILS	Variety of geology - well drained soils, sometimes skeletal and rocky		Variety of geology - moist, fertile soils.		Often rocky, with variety of geology – sands, silts and loams	
DESCRIPTION	Stringybark and Box dry, grassy woodland or forest		Blue Gum and Peppermint shrubby, moist, tall forest		Blue Gum – Manna Gum tall moist forest	
LOCATION EXAMPLE	Old Highlands Rd - travelling S to N, exposed aspects and steep slopes (Grassy Dry) and moist gullies and protected slopes (Herb-rich Foothill Forest).		Caveat Bushland Reserve, c 1.2 km along Molesworth Rd; Yarck Flora Reserve		Jack Ck, upstream of Chisholms Rd or downstream of Fassifern Rd; Hughes Ck, east and west of Nolans Rd, Dropmore	
TREES >8m ☹ Poorly drained sites	<i>Eucalyptus dives</i> <i>E. goniocalyx</i> <i>E. macrorhyncha</i> <i>E. polyanthemos</i>	Broad-leaved Peppermint Long-leaved Box Red Stringybark Red Box	<i>Acacia dealbata</i> <i>A. melanoxylon</i> <i>Eucalyptus dives</i> <i>E. globulus</i> subsp. <i>bicostata</i> <i>E. goniocalyx</i> <i>E. radiata</i> <i>E. obliqua</i>	Silver Wattle Blackwood Broad-leaf Peppermint Blue Gum (Eurabbie) Long-leaf Box Narrow-leaf Peppermint Messmate	<i>Acacia dealbata</i> <i>A. melanoxylon</i> ☹ <i>Eucalyptus camphora</i> subsp. <i>humeana</i> <i>E. globulus</i> subsp. <i>bicostata</i> ☹ <i>E. ovata</i> <i>E. viminalis</i> <i>Pomaderris aspera</i>	Silver Wattle Blackwood ☹ Mountain Swamp Gum Blue Gum (Eurabbie) ☹ Swamp Gum Manna Gum Hazel Pomaderris
SHRUBS 1 - 8m ☹ Poorly drained sites	<i>Acacia paradoxa</i> <i>Cassinia aculeata</i> <i>Correa reflexa</i> <i>Dillwynia juniperina</i> <i>Grevillea alpina</i> <i>Monotoca scoparia</i> <i>Pimelea linifolia</i> <i>Pultenaea daphnoides</i>	Hedge Wattle Common Cassinia Common Correa Prickly Parrot-pea Cat's Claw Grevillea Prickly Broom-heath Slender Rice-flower Large-leaf Bush-pea	<i>Cassinia aculeata</i> <i>Coprosma quadrifida</i> <i>Epacris impressa</i> <i>Gynatrix pulchella</i> <i>Hymenandra dentata</i> <i>Mirbelia oxylobiodes</i> <i>Ozothamnus ferrugineus</i> <i>Pimelea axillora</i>	Common Cassinia Prickly Currant-bush Common Heath Hemp Bush Tree Violet Mountain Mirbelia Tree Everlasting Bootlace Bush	<i>Acacia pravissima</i> <i>Bursaria spinosa</i> <i>Cassinia aculeata</i> <i>Coprosma quadrifida</i> ☹ <i>Leptospermum lanigerum</i> <i>L. myrsinoides</i> <i>Pomaderris prunifolia</i> <i>Prostanthera lasianthos</i> <i>Spyridium parvifolium</i>	Ovens Wattle Sweet Bursaria Common Cassinia Prickly Currant-bush ☹ Woolly Tea-tree Heath Tea-tree Prunus Pomaderris Victorian Christmas-bush Dusty Miller
SMALL SHRUBS <1m	<i>Dillwynia sericea</i> <i>Hibbertia obtusifolia</i>	Showy Parrot-pea Grey Guinea-flower	<i>Hibbertia obtusifolia</i> <i>Hovea linearis</i> <i>Pimelea humilis</i>	Grey Guinea-flower Common Hovea Common Rice-flower		
GROUND COVERS	<i>Astroloma humifusum</i> <i>Dianella revoluta</i> <i>Echinopogon ovatus</i> <i>Helichrysum scorpioides</i> <i>Joycea pallida</i> <i>Microlaena stipoides</i> <i>Poa morrisii</i> <i>Themeda triandra</i>	Cranberry Heath Black-anther Flax-lily Common Hedgehog-grass Button Everlasting Silvertop Wallaby-grass Weeping Grass Soft Tussock-grass Kangaroo Grass	<i>Billardiera scandens</i> <i>Blechnum nudum</i> <i>Dianella tasmanica</i> <i>Echinopogon ovatus</i> <i>Glycine clandestina</i> <i>Microlaena stipoides</i> <i>Poa morrisii</i> <i>P. sieberiana</i> var. <i>sieberiana</i>	Common Apple-berry Fishbone Water-fern Tasman Flax-lily Common Hedgehog-grass Twining Glycine Weeping Grass Soft Tussock-grass Grey Tussock-grass	<i>Blechnum nudum</i> <i>Carex appressa</i> <i>C. fascicularis</i> <i>Dianella tasmanica</i> <i>Lomandra longifolia</i> <i>Microlaena stipoides</i> <i>Poa ensiformis</i> <i>Polystichum proliferum</i>	Fishbone Water-fern Tall Sedge Tassell Sedge Tasman Flax-lily Spiny-headed Mat-rush Weeping Grass Sword Tussock-grass Mother Shield-fern

Vegetation Profile for the Ghin Ghin Creeklines, Rivers and Floodplains - Plains - Valleys and Low Hills

An Excerpt from the Revegetation Guide for the Goulburn Broken Catchment

Edited by Gill Earl, Fleur Stelling, Mary Titcumb and Sue Berwick.

Department of Natural Resources & Environment

© The State of Victoria, Department of Natural Resources and Environment, 2000 ISBN 0 7311 4731 6

The accompanying sheet is an excerpt from a 400+ page document available on the GBCMA website at <http://www.gbcma.gov.vic.au/revegetation> or on CDROM and in print form available from NRE offices:

Alexandra Benalla
46 Aitken St Sydney Road Complex
Alexandra VIC 3714 Benalla VIC 3672
tel: 03-5772-0200 tel: 03-5761-16110

Tatura Wangaratta
Ferguson Rd 'Tara Court' Ford St
Tatura VIC 3616 Wangaratta VIC 3679
tel: 03-5833-5222 tel: 03-5721-5022

Disclaimer

This guide aims to improve knowledge on the information herein. As such, it is available for use for purposes of study and extension, providing due acknowledgment is given.

The opinions, advice and information contained in this publication have not been provided at the request of any person but are offered by the Department of Natural Resources & Environment solely for information purposes.

While the information contained in this publication has been formulated in good faith, the contents do not take into account all the factors which need to be considered before putting that information into practice. Accordingly, no person should rely on anything contained herein as a substitute for specific advice.

Contents

Foreword	
Acknowledgments	
Dedication	
About the Contributors	
Area covered by the Guide	
Introduction	
Part One	
Chapter 1	The Goulburn Broken Catchment and its vegetation types
Chapter 2	Rare and threatened plants in the Goulburn Broken Catchment
Chapter 3	Interconnections: animals, plants and catchment health
Chapter 4	Environmental weeds in the Goulburn Broken Catchment
Chapter 5	Remnant vegetation - values and threats
Chapter 6	Remnant vegetation, revegetation and farm planning
Chapter 7	Re-establishing native vegetation
Chapter 8	Direct seeding
Chapter 9	Salinity and native vegetation establishment
Chapter 10	Enhancing streams by revegetation and erosion control
Chapter 11	Constructed wetlands
Chapter 12	The economic use of remnant vegetation
Chapter 13	Linking commercial timber production and conservation: an approach to farm forestry
Chapter 14	Analogue forestry: a sustainable production system
Chapter 15	Values of native grasses and pastures on the farm
Chapter 16	Collecting seed from locally native plants
Chapter 17	Propagating locally native plants for revegetation

Practical Information Notes

Understorey
Natural Pest Control
Rural Dieback
Insects and Tree Decline
Mistletoe
Vegetation Management - The Catchment Approach for Landcare Groups
Getting to Know your Local Plants
Revegetation Activity Calendar
Windbreaks
Seedling Quality Tips
Planting Densities for Different Ecosystems

Part Two - Locality Maps & General Native Vegetation Profiles

Choosing the right profile
Index to general native vegetation profiles

Part Three - Plant Descriptions available only in the full print publication

Appendices

1	Rare and threatened plants in the Goulburn Broken Catchment
2	Regionally significant plants in the Goulburn Broken Catchment
3	Environmental weeds in the Goulburn Broken Catchment
4	Wildlife in the Goulburn Broken Catchment
5	Native seed suppliers
6	What to plant and where in wetlands
7	Revegetation costs
8	Regional nurseries supplying locally native plants
9	Further assistance and contacts
10	Native plant field guides

Glossary

Bibliography

Index available only in the full print publication

GHIN GHIN – Creeklines, Rivers and Floodplains - Plains - Valleys and Low Hills

Note: For general re-planting select 30% trees and at least 70% shrubs. If enhancing sites with remnant trees, select shrubs only and allow trees to regenerate. Additions of locally native species for this list are gratefully accepted - contact your local NRE office.



LANDFORM	Creeklines, Rivers and Floodplains		Plains		Valleys and Low Hills	
EVC	Creekline Grassy Woodland/Floodplain Riparian Woodland		Plains Grassy Woodland		Grassy Woodland/Valley Grassy Forest	
GEOLOGY & SOILS	Alluvium – clays, loams - flooded seasonally		Alluvium - clay loams and loams		Fertile, well drained, reasonable water availability	
DESCRIPTION	Red Gum grassy woodland		Red Gum and Box grassy woodland		Mixed species shrubby, grassy woodland	
LOCATION	Goulburn River at Ghin Ghin – Highlands Rd;		Ghin Ghin – Highlands Rd, up to 2.5 km north of the Goulburn River		Highlands Rd, 9 km north of Goulburn Valley Hwy	
EXAMPLE	Goulburn River at Goulburn Valley Highway, north of Trawool					
TREES >8m ⇔ On adjacent flats ♣ Wetter sites	<i>Acacia dealbata</i> <i>Eucalyptus camaldulensis</i> ⇔ <i>E. melliodora</i> ⇔ <i>E. microcarpa</i> <i>E. ovata</i> <i>E. viminalis</i>	Silver Wattle River Red Gum ⇔ Yellow Box ⇔ Grey Box Swamp Gum Manna Gum	<i>Eucalyptus camaldulensis</i> <i>E. melliodora</i> <i>E. viminalis</i>	River Red Gum Yellow Box Manna Gum	♣ <i>Acacia dealbata</i> <i>A. mearnsii</i> ♣ <i>A. melanoxylon</i> <i>Eucalyptus dives</i> <i>E. goniocalyx</i> <i>E. macrorhyncha</i> ♣ <i>E. melliodora</i> <i>E. polyanthemos</i>	♣ Silver Wattle Black Wattle ♣ Blackwood Broad-leaved Peppermint Long-leaf Box Red Stringybark ♣ Yellow Box Red Box
SHRUBS 1 - 8m	<i>Acacia pycnantha</i> <i>Bursaria spinosa</i> <i>Callistemon sieberi</i> <i>Cassinia arcuata</i> <i>Hymenanthera dentata</i> <i>Leptospermum continentale</i> <i>Melaleuca ericifolia</i>	Golden Wattle Sweet Bursaria River Bottlebrush Drooping Cassinia Tree Violet Prickly Tea-tree Swamp Paperbark	<i>Acacia pycnantha</i> <i>Cassinia arcuata</i> <i>Daviesia ulicifolia</i>	Golden Wattle Drooping Cassinia Gorse Bitter-pea	<i>Acacia pycnantha</i> <i>Bursaria spinosa</i> <i>Cassinia aculeata</i> <i>C. arcuata</i> <i>Daviesia leptophylla</i> <i>Hymenanthera dentata</i> <i>Indigofera australis</i>	Golden Wattle Sweet Bursaria Common Cassinia Drooping Cassinia Narrow-leaf Bitter-pea Tree Violet Austral Indigo
SMALL SHRUBS <1m					<i>Hibbertia obtusifolia</i> <i>Hovea linearis</i> <i>Pimelea humilis</i>	Grey Guinea-flower Common Hovea Common Rice-flower
GROUND COVERS	<i>Carex appressa</i> <i>C. fascicularis</i> <i>Elymus scaber</i> <i>Glyceria australis</i> <i>Lomandra longifolia</i> <i>Microlaena stipoides</i> <i>Poa labillardieri</i> <i>P. morrisii</i> <i>Phragmites australis</i> <i>Themeda triandra</i>	Tall Sedge Tassel Sedge Common Wheat-grass Australian Sweet-grass Spiny-headed Mat-rush Weeping Grass Common Tussock-grass Soft Tussock-grass Common Reed Kangaroo Grass	<i>Austrostipa semibarbarata</i> <i>Carex appressa</i> <i>Dianella longifolia</i> <i>D. revoluta</i> <i>Lomandra filiformis</i> <i>Poa labillardieri</i> <i>P. morrisii</i> <i>P. sieberiana</i> var. <i>sieberiana</i> <i>Themeda triandra</i>	Fibrous Spear-grass Tall Sedge Pale Flax-lily Black-anther Flax-lily Wattle Mat-rush Common Tussock-grass Soft Tussock-grass Grey Tussock-grass Kangaroo Grass	<i>Acrotiche prostrata</i> <i>Austrostipa densifolia</i> <i>Dianella revoluta</i> <i>Echinopogon ovatus</i> <i>Glycine clandestina</i> <i>Lomandra filiformis</i> <i>Microlaena stipoides</i> <i>Poa morrisii</i> <i>Themeda triandra</i>	Trailing Ground-berry Dense Spear-grass Black-anther Flax-lily Common Hedgehog-grass Twining Glycine Wattle Mat-rush Weeping Grass Soft Tussock-grass Kangaroo Grass

TALLAROOK

STRATH CREEK

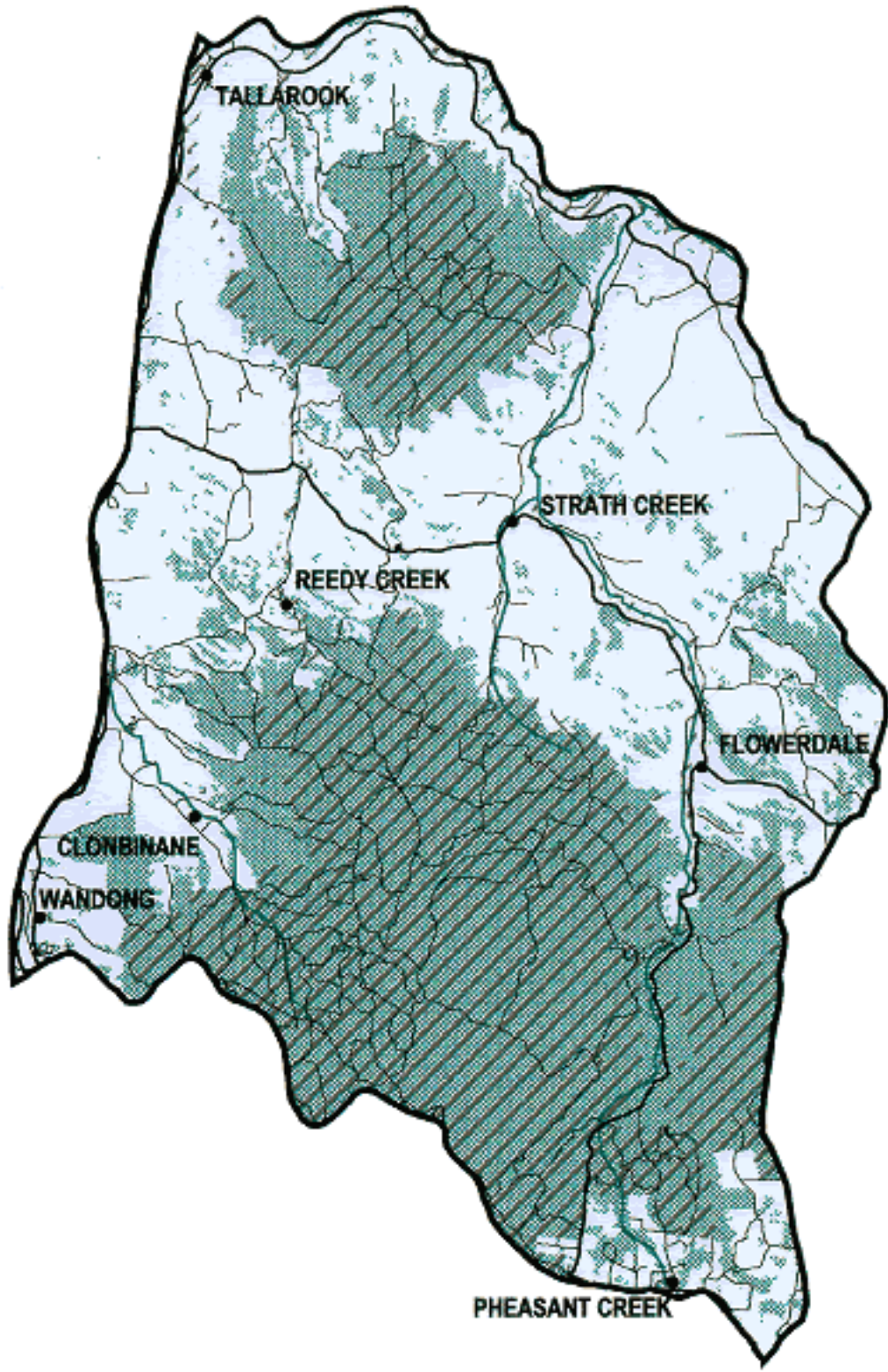
REEDY CREEK

FLOWERDALE

CLONBINANE

WANDONG

PHEASANT CREEK



Vegetation Profile for the Mount Disappointment Valleys and Low Hills - Rocky Outcrops - Protected Slopes and Moist Valleys

An Excerpt from the Revegetation Guide for the Goulburn Broken Catchment

Edited by Gill Earl, Fleur Stelling, Mary Titcomb and Sue Berwick.

Department of Natural Resources & Environment

© The State of Victoria, Department of Natural Resources and Environment, 2000 ISBN 0 7311 4731 6

The accompanying sheet is an excerpt from a 400+ page document available on the GBCMA website at <http://www.gbcma.gov.vic.au/revegetation> or on CDROM and in print form available from NRE offices:

Alexandra Benalla
46 Aitken St Sydney Road Complex
Alexandra VIC 3714 Benalla VIC 3672
tel: 03-5772-0200 tel: 03-5761-16110

Tatura Wangaratta
Ferguson Rd 'Tara Court' Ford St
Tatura VIC 3616 Wangaratta VIC 3679
tel: 03-5833-5222 tel: 03-5721-5022

Disclaimer

This guide aims to improve knowledge on the information herein. As such, it is available for use for purposes of study and extension, providing due acknowledgment is given.

The opinions, advice and information contained in this publication have not been provided at the request of any person but are offered by the Department of Natural Resources & Environment solely for information purposes.

While the information contained in this publication has been formulated in good faith, the contents do not take into account all the factors which need to be considered before putting that information into practice. Accordingly, no person should rely on anything contained herein as a substitute for specific advice.

Contents

Foreword
Acknowledgments
Dedication
About the Contributors
Area covered by the Guide
Introduction

Part One

Chapter 1 The Goulburn Broken Catchment and its vegetation types
Chapter 2 Rare and threatened plants in the Goulburn Broken Catchment
Chapter 3 Interconnections: animals, plants and catchment health
Chapter 4 Environmental weeds in the Goulburn Broken Catchment
Chapter 5 Remnant vegetation - values and threats
Chapter 6 Remnant vegetation, revegetation and farm planning
Chapter 7 Re-establishing native vegetation
Chapter 8 Direct seeding
Chapter 9 Salinity and native vegetation establishment
Chapter 10 Enhancing streams by revegetation and erosion control
Chapter 11 Constructed wetlands
Chapter 12 The economic use of remnant vegetation
Chapter 13 Linking commercial timber production and conservation: an approach to farm forestry
Chapter 14 Analogue forestry: a sustainable production system
Chapter 15 Values of native grasses and pastures on the farm
Chapter 16 Collecting seed from locally native plants
Chapter 17 Propagating locally native plants for revegetation

Practical Information Notes

Understorey
Natural Pest Control
Rural Dieback
Insects and Tree Decline
Mistletoe
Vegetation Management - The Catchment Approach for Landcare Groups
Getting to Know your Local Plants
Revegetation Activity Calendar
Windbreaks
Seedling Quality Tips
Planting Densities for Different Ecosystems

Part Two - Locality Maps & General Native Vegetation Profiles

Choosing the right profile
Index to general native vegetation profiles

Part Three - Plant Descriptions available only in the full print publication

Appendices

1 Rare and threatened plants in the Goulburn Broken Catchment
2 Regionally significant plants in the Goulburn Broken Catchment
3 Environmental weeds in the Goulburn Broken Catchment
4 Wildlife in the Goulburn Broken Catchment
5 Native seed suppliers
6 What to plant and where in wetlands
7 Revegetation costs
8 Regional nurseries supplying locally native plants
9 Further assistance and contacts
10 Native plant field guides

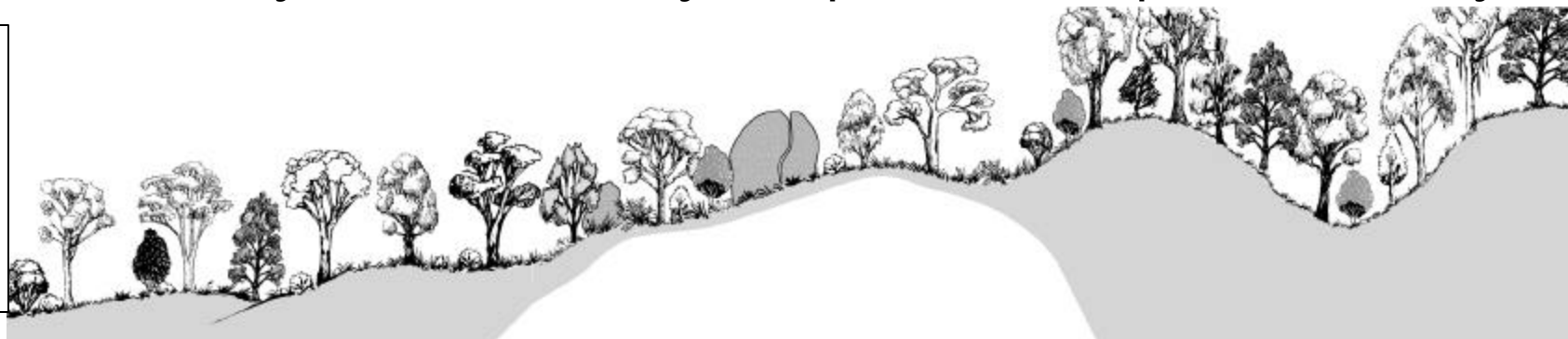
Glossary

Bibliography

Index available only in the full print publication

MT DISAPPOINTMENT – Valleys and Low Hills - Rocky Outcrops - Protected Slopes and Moist Valleys

Note: For general re-planting select 30% trees and at least 70% shrubs. If enhancing sites with remnant trees, select shrubs only and allow trees to regenerate. Additions of locally native species for this list are gratefully accepted - contact your local NRE office.



LANDFORM	Valleys and Low Hills		Granite Hills, Slopes and Rocky Outcrops		Protected Upper Slopes, Steep Gullies, Moist Valleys	
EVC	Grassy Woodland/Valley Grassy Forest		Granitic Hills Woodland/Rocky Outcrop Shrubland		Herb-rich Foothill Forest	
GEOLOGY & SOILS	Fertile, well drained, reasonable water availability		Granite parent rock with coarse sandy soils		Variety of geologies - moist, fertile soils.	
DESCRIPTION	Mixed species shrubby - grassy woodland		Stringybark - Box shrubby, herb-rich rocky outcrops		Blue Gum - Peppermint shrubby, moist tall forest	
LOCATION EXAMPLE	Strath Creek Rd, 500m west of Murchison Spur Rd to Reedy Creek Rd; Lower slopes of Tallarook Recreation Reserve, Sanctuary Rd Tallarook		Albers Rd, c 1 km from Landscape Rd, east of Tallarook		Tallarook State Forest along Ennis Rd, c 3 km east of Hume Highway; Tallarook State Forest along Fairview Rd near East Falls Rd	
TREES >8m Wetter sites	<ul style="list-style-type: none"> ◆ <i>Acacia dealbata</i> <i>A. implexa</i> <i>Eucalyptus macrorhyncha</i> ◆ <i>E. melliodora</i> <i>E. microcarpa</i> <i>E. polyanthemos</i> 	<ul style="list-style-type: none"> ◆ Silver Wattle Lightwood Red Stringybark ◆ Yellow Box Grey Box Red Box 	<ul style="list-style-type: none"> ◆ <i>Acacia dealbata</i> <i>A. implexa</i> <i>A. mearnsii</i> ◆ <i>A. melanoxylon</i> ◆ <i>Eucalyptus globulus</i> subsp. <i>Bicostata</i> <i>E. goniocalyx</i> <i>E. macrorhyncha</i> <i>E. polyanthemos</i> 	<ul style="list-style-type: none"> ◆ Silver Wattle Lightwood Black Wattle ◆ Blackwood ◆ Eurabbie Long-leaf Box Red Stringybark Red Box 	<ul style="list-style-type: none"> <i>Acacia dealbata</i> <i>A. melanoxylon</i> <i>Eucalyptus dives</i> <i>E. globulus</i> subsp. <i>bicostata</i> <i>E. goniocalyx</i> <i>E. obliqua</i> <i>E. rubida</i> <i>E. viminalis</i> 	<ul style="list-style-type: none"> Silver Wattle Blackwood Broad-leaved Peppermint Eurabbie (Blue Gum) Long-leaf Box Messmate Candlebark Manna Gum
SHRUBS 1 - 8m Poorly drained sites Upper elevations	<ul style="list-style-type: none"> <i>Acacia paradoxa</i> <i>A. verniciflua</i> <i>Bursaria spinosa</i> <i>Cassinia aculeata</i> <i>Exocarpos strictus</i> <i>Hymenanthera dentata</i> ◆ <i>Leptospermum continentale</i> 	<ul style="list-style-type: none"> Hedge Wattle Varnish Wattle Sweet Bursaria Common Cassinia Pale-fruit Ballart Tree Violet ◆ Prickly Tea-tree 	<ul style="list-style-type: none"> <i>Cassinia aculeata</i> ◆ <i>C. longifolia</i> <i>Exocarpos strictus</i> <i>Hymenanthera dentata</i> <i>Pimelea linifolia</i> 	<ul style="list-style-type: none"> Common Cassinia ◆ Shiny Cassinia Pale-fruit Ballart Tree Violet Slender Rice-flower 	<ul style="list-style-type: none"> <i>Acacia leprosa</i> ◆ <i>Coprosma hirtella</i> ◆ <i>C. quadrifida</i> <i>Epacris impressa</i> ◆ <i>Pimelea axiflora</i> <i>P. linifolia</i> <i>Spyridium parvifolium</i> 	<ul style="list-style-type: none"> Cinnamon Wattle ◆ Rough Coprosma ◆ Prickly Currant-bush Common Heath ◆ Bootlace Bush Slender Rice-flower Dusty Miller
SMALL SHRUBS <1m	<ul style="list-style-type: none"> <i>Hibbertia obtusifolia</i> <i>Hovea linearis</i> 	<ul style="list-style-type: none"> Grey Guinea-flower Common Hovea 	<ul style="list-style-type: none"> <i>Tetradlea ciliata</i> 	<ul style="list-style-type: none"> Pink-bells 	<ul style="list-style-type: none"> <i>Hibbertia obtusifolia</i> <i>Pimelea humilis</i> <i>Tetradlea ciliata</i> 	<ul style="list-style-type: none"> Grey Guinea-flower Common Rice-flower Pink-bells
GROUND COVERS Rocky Outcrops	<ul style="list-style-type: none"> <i>Acrotiche prostrata</i> <i>Austrodanthonia pilosa</i> <i>Austrostipa densiflora</i> <i>Dianella longifolia</i> <i>Elymus scaber</i> <i>Glycine clandestina</i> <i>Leptorhynchos squamatus</i> <i>Poa sieberiana</i> var. <i>sieberiana</i> <i>Themeda triandra</i> 	<ul style="list-style-type: none"> Trailing Ground-berry Velvet Wallaby-grass Dense Spear-grass Pale Flax-lily Common Wheat-grass Twining Glycine Scaly Buttons Grey Tussock-grass Kangaroo Grass 	<ul style="list-style-type: none"> <i>Austrodanthonia pilosa</i> <i>Austrostipa densiflora</i> ◆ <i>Isotoma axillaris</i> <i>Microlaena stipoides</i> <i>Pelargonium australe</i> <i>Poa sieberiana</i> var. <i>hirtella</i> <i>Senecio hispidulus</i> <i>Styliidium graminifolium</i> 	<ul style="list-style-type: none"> Velvet Wallaby-grass Dense Spear-grass ◆ Rock Isotome Weeping Grass Austral Stork's-bill Grey Tussock-grass Rough Fireweed Grass Trigger-plant 	<ul style="list-style-type: none"> <i>Ajuga australis</i> <i>Dianella tasmanica</i> <i>Echinopogon ovatus</i> <i>Elymus scaber</i> <i>Glycine clandestina</i> <i>Lomandra longifolia</i> <i>Microlaena stipoides</i> <i>Platylabium formosum</i> <i>Poa sieberiana</i> var. <i>sieberiana</i> 	<ul style="list-style-type: none"> Austral Bugle Tasman Flax-lily Common Hedgehog-grass Common Wheat-grass Twining Glycine Spiny-headed Mat-rush Weeping Grass Handsome Flat-pea Grey Tussock-grass

Vegetation Profile for the Mount Disappointment (Lower Catchments) Creeks and Rivers - Plains - Valleys and Low Hills

An Excerpt from the Revegetation Guide for the Goulburn Broken Catchment

Edited by Gill Earl, Fleur Stelling, Mary Titcumb and Sue Berwick.

Department of Natural Resources & Environment

© The State of Victoria, Department of Natural Resources and Environment, 2000 ISBN 0 7311 4731 6

The accompanying sheet is an excerpt from a 400+ page document available on the GBCMA website at <http://www.gbcma.gov.vic.au/revegetation> or on CDROM and in print form available from NRE offices:

Alexandra Benalla
46 Aitken St Sydney Road Complex
Alexandra VIC 3714 Benalla VIC 3672
tel: 03-5772-0200 tel: 03-5761-16110

Tatura Wangaratta
Ferguson Rd 'Tara Court' Ford St
Tatura VIC 3616 Wangaratta VIC 3679
tel: 03-5833-5222 tel: 03-5721-5022

Disclaimer

This guide aims to improve knowledge on the information herein. As such, it is available for use for purposes of study and extension, providing due acknowledgment is given.

The opinions, advice and information contained in this publication have not been provided at the request of any person but are offered by the Department of Natural Resources & Environment solely for information purposes.

While the information contained in this publication has been formulated in good faith, the contents do not take into account all the factors which need to be considered before putting that information into practice. Accordingly, no person should rely on anything contained herein as a substitute for specific advice.

Contents

Foreword
Acknowledgments
Dedication
About the Contributors
Area covered by the Guide
Introduction

Part One

Chapter 1 The Goulburn Broken Catchment and its vegetation types
Chapter 2 Rare and threatened plants in the Goulburn Broken Catchment
Chapter 3 Interconnections: animals, plants and catchment health
Chapter 4 Environmental weeds in the Goulburn Broken Catchment
Chapter 5 Remnant vegetation - values and threats
Chapter 6 Remnant vegetation, revegetation and farm planning
Chapter 7 Re-establishing native vegetation
Chapter 8 Direct seeding
Chapter 9 Salinity and native vegetation establishment
Chapter 10 Enhancing streams by revegetation and erosion control
Chapter 11 Constructed wetlands
Chapter 12 The economic use of remnant vegetation
Chapter 13 Linking commercial timber production and conservation: an approach to farm forestry
Chapter 14 Analogue forestry: a sustainable production system
Chapter 15 Values of native grasses and pastures on the farm
Chapter 16 Collecting seed from locally native plants
Chapter 17 Propagating locally native plants for revegetation

Practical Information Notes

Understorey
Natural Pest Control
Rural Dieback
Insects and Tree Decline
Mistletoe
Vegetation Management - The Catchment Approach for Landcare Groups
Getting to Know your Local Plants
Revegetation Activity Calendar
Windbreaks
Seedling Quality Tips
Planting Densities for Different Ecosystems

Part Two - Locality Maps & General Native Vegetation Profiles

Choosing the right profile
Index to general native vegetation profiles

Part Three - Plant Descriptions available only in the full print publication

Appendices

1 Rare and threatened plants in the Goulburn Broken Catchment
2 Regionally significant plants in the Goulburn Broken Catchment
3 Environmental weeds in the Goulburn Broken Catchment
4 Wildlife in the Goulburn Broken Catchment
5 Native seed suppliers
6 What to plant and where in wetlands
7 Revegetation costs
8 Regional nurseries supplying locally native plants
9 Further assistance and contacts
10 Native plant field guides

Glossary

Bibliography

Index available only in the full print publication

MT DISAPPOINTMENT (LOWER CATCHMENTS) – Creeks and Rivers - Plains - Valleys and Low Hills

Note: For general re-planting select 30% trees and at least 70% shrubs. If enhancing sites with remnant trees, select shrubs only and allow trees to regenerate. Additions of locally native species for this list are gratefully accepted - contact your local NRE office.



LANDFORM	Creeklines, Rivers and Floodplains		Plains		Valleys and Low Hills	
EVC	Creeklines Grassy Woodland/Floodplain Riparian Woodland		Plains Grassy Woodland		Grassy Woodland/Valley Grassy Forest	
GEOLOGY & SOILS	Alluvium - clays, silts and sands		Alluvium - clay loams and loams		Fertile, well drained, reasonable water availability	
DESCRIPTION	Red Gum grassy woodland		Red Gum - Box grassy woodland		Mixed species shrubby - grassy woodland	
LOCATION EXAMPLE	No intact examples known; Frontage along the Goulburn River and Strath Creek		Plains around Broadford, Tallarook and Strath Creek		Strath Creek Rd, 500m west of Murchison Spur Rd to Reedy Creek Rd; Lower slopes of Tallarook Recreation Reserve, Sanctuary Rd Tallarook	
TREES >8m ☹ Poorly drained sites ↔ On adjacent flats ♣ Wetter sites	<i>Acacia melanoxylon</i> <i>Eucalyptus camaldulensis</i> ↔ <i>E. melliodora</i> ↔ <i>E. microcarpa</i> ☹ <i>E. ovata</i>	Blackwood River Red Gum ↔ Yellow Box ↔ Grey Box ☹ Swamp Gum	♣ <i>Acacia dealbata</i> <i>A. mearnsii</i> ♣ <i>A. melanoxylon</i> <i>Eucalyptus camaldulensis</i> <i>E. melliodora</i> <i>E. microcarpa</i>	♣ Silver Wattle Black Wattle ♣ Blackwood River Red Gum Yellow Box Grey Box	♣ <i>Acacia dealbata</i> <i>A. implexa</i> ♣ <i>A. melanoxylon</i> <i>Eucalyptus dives</i> <i>E. macrorhyncha</i> ♣ <i>E. melliodora</i> <i>E. microcarpa</i> <i>E. polyanthemos</i>	♣ Silver Wattle Lightwood ♣ Blackwood Broad-leaved Peppermint Red Stringybark ♣ Yellow Box Grey Box Red Box
SHRUBS 1 - 8m ☹ Poorly drained sites	<i>Acacia verniciflua</i> <i>Bursaria spinosa</i> <i>Callistemon sieberi</i> <i>Hymenanthera dentata</i> ☹ <i>Leptospermum continentale</i> <i>L. lanigerum</i> <i>L. obovatum</i> <i>Melaleuca parvistaminea</i>	Varnish Wattle Sweet Bursaria River Bottlebrush Tree Violet ☹ Prickly Tea-tree Woolly Tea-tree River Tea-tree Rough-barked Honey-myrtle	<i>Acacia paradoxa</i> <i>A. pycnantha</i> <i>Bursaria spinosa</i> <i>Cassinia arcuata</i> <i>Daviesia ulicifolia</i> <i>Hymenanthera dentata</i>	Hedge Wattle Golden Wattle Sweet Bursaria Drooping Cassinia Gorse Bitter-pea Tree Violet	<i>Acacia paradoxa</i> <i>A. verniciflua</i> <i>Bursaria spinosa</i> <i>Cassinia aculeata</i> <i>Exocarpos strictus</i> <i>Hymenanthera dentata</i> ☹ <i>Leptospermum continentale</i>	Hedge Wattle Varnish Wattle Sweet Bursaria Common Cassinia Pale-fruit Ballart Tree Violet ☹ Prickly Tea-tree
SMALL SHRUBS <1m	<i>Goodenia ovata</i>	Hop Goodenia			<i>Hibbertia obtusifolia</i> <i>Pimelea humilis</i>	Grey Guinea-flower Common Rice-flower
GROUND COVERS	<i>Carex appressa</i> <i>C. fascicularis</i> <i>Elymus scaber</i> <i>Glyceria australis</i> <i>Lomandra longifolia</i> <i>Microlaena stipoides</i> <i>Poa labillardieri</i> <i>Themeda triandra</i>	Tall Sedge Tassel Sedge Common Wheat-grass Australian Sweet-grass Spiny-headed Mat-rush Weeping Grass Common Tussock-grass Kangaroo Grass	<i>Carex appressa</i> <i>Dianella longifolia</i> <i>Elymus scaber</i> <i>Leptorhynchos squamatus</i> <i>Lomandra multiflora</i> <i>Poa morrisii</i> <i>P. sieberiana</i> var. <i>sieberiana</i> <i>Themeda triandra</i>	Tall Sedge Pale Flax-lily Common Wheat-grass Scaly Buttons Many-flowered Flax-lily Soft Tussock-grass Grey Tussock-grass Kangaroo Grass	<i>Acrotriche prostrata</i> <i>Austrostipa densiflora</i> <i>Dianella longifolia</i> <i>Echinopogon ovalus</i> <i>Elymus scaber</i> <i>Glycine clandestina</i> <i>Poa sieberiana</i> var. <i>sieberiana</i> <i>Themeda triandra</i>	Trailing Ground-berry Dense Spear-grass Pale Flax-lily Common Hedgehog-grass Common Wheat-grass Twining Glycine Grey Tussock-grass Kangaroo Grass

Vegetation Profile for the Mount Disappointment (Upper Catchments) Dry Slopes and Ridges - Rivers - Protected Slopes An

Excerpt from the Revegetation Guide for the Goulburn Broken Catchment

Edited by Gill Earl, Fleur Stelling, Mary Titcumb and Sue Berwick.

Department of Natural Resources & Environment

© The State of Victoria, Department of Natural Resources and Environment, 2000 ISBN 0 7311 4731 6

The accompanying sheet is an excerpt from a 400+ page document available on the GBCMA website at <http://www.gbcma.gov.vic.au/revegetation> or on CDROM and in print form available from NRE offices:

Alexandra Benalla
46 Aitken St Sydney Road Complex
Alexandra VIC 3714 Benalla VIC 3672
tel: 03-5772-0200 tel: 03-5761-16110

Tatura Wangaratta
Ferguson Rd 'Tara Court' Ford St
Tatura VIC 3616 Wangaratta VIC 3679
tel: 03-5833-5222 tel: 03-5721-5022

Disclaimer

This guide aims to improve knowledge on the information herein. As such, it is available for use for purposes of study and extension, providing due acknowledgment is given.

The opinions, advice and information contained in this publication have not been provided at the request of any person but are offered by the Department of Natural Resources & Environment solely for information purposes.

While the information contained in this publication has been formulated in good faith, the contents do not take into account all the factors which need to be considered before putting that information into practice. Accordingly, no person should rely on anything contained herein as a substitute for specific advice.

Contents

Foreword	
Acknowledgments	
Dedication	
About the Contributors	
Area covered by the Guide	
Introduction	
Part One	
Chapter 1	The Goulburn Broken Catchment and its vegetation types
Chapter 2	Rare and threatened plants in the Goulburn Broken Catchment
Chapter 3	Interconnections: animals, plants and catchment health
Chapter 4	Environmental weeds in the Goulburn Broken Catchment
Chapter 5	Remnant vegetation - values and threats
Chapter 6	Remnant vegetation, revegetation and farm planning
Chapter 7	Re-establishing native vegetation
Chapter 8	Direct seeding
Chapter 9	Salinity and native vegetation establishment
Chapter 10	Enhancing streams by revegetation and erosion control
Chapter 11	Constructed wetlands
Chapter 12	The economic use of remnant vegetation
Chapter 13	Linking commercial timber production and conservation: an approach to farm forestry
Chapter 14	Analogue forestry: a sustainable production system
Chapter 15	Values of native grasses and pastures on the farm
Chapter 16	Collecting seed from locally native plants
Chapter 17	Propagating locally native plants for revegetation

Practical Information Notes

Understorey
Natural Pest Control
Rural Dieback
Insects and Tree Decline
Mistletoe
Vegetation Management - The Catchment Approach for Landcare Groups
Getting to Know your Local Plants
Revegetation Activity Calendar
Windbreaks
Seedling Quality Tips
Planting Densities for Different Ecosystems

Part Two - Locality Maps & General Native Vegetation Profiles

Choosing the right profile
Index to general native vegetation profiles

Part Three - Plant Descriptions available only in the full print publication

Appendices

1	Rare and threatened plants in the Goulburn Broken Catchment
2	Regionally significant plants in the Goulburn Broken Catchment
3	Environmental weeds in the Goulburn Broken Catchment
4	Wildlife in the Goulburn Broken Catchment
5	Native seed suppliers
6	What to plant and where in wetlands
7	Revegetation costs
8	Regional nurseries supplying locally native plants
9	Further assistance and contacts
10	Native plant field guides

Glossary

Bibliography

Index available only in the full print publication

MT DISAPPOINTMENT (UPPER CATCHMENTS) – Dry Slopes and Ridges - Rivers - Protected Slopes

Note: For general re-planting select 30% trees and at least 70% shrubs. If enhancing sites with remnant trees, select shrubs only and allow trees to regenerate. Additions of locally native species for this list are gratefully accepted - contact your local NRE office.



LANDFORM	Dry Slopes and Ridges		Protected Upper Slopes, Steep Gullies, Moist Valleys		Swift - flowing Rivers and Streams	
EVC	Grassy Dry Forest		Herb-rich Foothill Forest		Riparian Forest	
GEOLOGY & SOILS	Range of geology - shallow, well drained soils, sometimes rocky		Range of geology - moist, fertile soils.		Rocky river beds - variety of soils /geologies - sands, silts, loams	
DESCRIPTION	Box - Stringybark dry, grassy - shrubby woodland		Blue Gum - Peppermint shrubby, moist tall forest		Taller riparian forests in higher rainfall areas	
LOCATION EXAMPLE	Murchison Spur Rd - Strath Creek Rd intersection; Cunninghams Rd north of Tyaak		Tallarook State Forest along Ennis Rd, c 3 km east of Hume Highway; Tallarook State Forest along Fairview Rd near East Falls Rd		Stream crossing at Albers Rd, c 0.1 km east of Landscape Rd; Reedy Creek along Reedy Creek Rd, Tyaak	
TREES >8m	<i>Acacia mearnsii</i> <i>Eucalyptus dives</i> <i>E. goniocalyx</i> <i>E. macrorhyncha</i> <i>E. obliqua</i> <i>E. polyanthemos</i> <i>E. rubida</i>	Black Wattle Broad-leaved Peppermint Long-leaved Box Red Stringybark Messmate Red Box Candlebark	<i>Acacia dealbata</i> <i>A. melanoxylon</i> <i>Eucalyptus dives</i> <i>E. globulus</i> subsp. <i>bicostata</i> <i>E. goniocalyx</i> <i>E. obliqua</i> <i>E. rubida</i> <i>E. viminalis</i>	Silver Wattle Blackwood Broad-leaved Peppermint Eurabbie (Blue Gum) Long-leaf Box Messmate Candlebark Manna Gum	<i>Acacia dealbata</i> <i>A. melanoxylon</i> <i>Eucalyptus globulus</i> subsp. <i>bicostata</i> <i>E. viminalis</i> <i>Pittosporum bicolor</i> <i>Pomaderris aspera</i> <i>Tasmannia lanceolata</i>	Silver Wattle Blackwood Blue Gum (Eurabbie) Manna Gum Banyalla Hazel Pomaderris Mountain Pepper
SHRUBS 1 - 8m ↑ Upper elevations	<i>Bursaria spinosa</i> <i>Cassinia aculeata</i> <i>Correa reflexa</i> <i>Daviesia leptophylla</i> <i>Pimelea linifolia</i>	Sweet Bursaria Common Cassinia Common Correa Narrow-leaf Bitter-pea Slender Rice-flower	<i>Acacia leprosa</i> ↑ <i>Coprosma hirtella</i> ↑ <i>C. quadrifida</i> <i>Epacris impressa</i> ↑ <i>Pimelea axiflora</i> <i>P. linifolia</i> <i>Spyridium parvifolium</i>	Cinnamon Wattle ↑ Rough Coprosma ↑ Prickly Currant-bush Common Heath ↑ Bootlace Bush Slender Rice-flower Dusty Miller	<i>Acacia mucronata</i> <i>Coprosma quadrifida</i> <i>Dodonaea viscosa</i> subsp. <i>angustissima</i> <i>Hymenanthera dentata</i> <i>Olearia lirata</i> <i>Prostanthera lasianthos</i>	Variable Sallow Wattle Prickly Currant-bush Sticky Hop bush Tree Violet Snow Daisy-bush Victorian Christmas-bush
SMALL SHRUBS <1m	<i>Acacia aculeatissima</i> <i>Hibbertia obtusifolia</i> <i>Tetradlea ciliata</i>	Thin-leaf Wattle Grey Guinea-flower Pink-bells	<i>Hibbertia obtusifolia</i> <i>Pimelea humilis</i> <i>Tetradlea ciliata</i>	Grey Guinea-flower Common Rice-flower Pink-bells	<i>Goodenia ovata</i> <i>Leucopogon hookeri</i>	Hop Goodenia Mountain Beard-heath
GROUND COVERS	<i>Austrodanthonia pilosa</i> <i>Austrostipa densiflora</i> <i>Elymus scaber</i> <i>Hardenbergia violacea</i> <i>Joycea pallida</i> <i>Leptorhynchos squamatus</i> <i>Microlaena stipoides</i> <i>Poa sieberiana</i> var. <i>sieberiana</i>	Velvet Wallaby-grass Dense Spear-grass Common Wheat-grass Purple Coral-pea Silvertop Wallaby-grass Scaly Buttons Weeping Grass Grey Tussock-grass	<i>Ajuga australis</i> <i>Dianella tasmanica</i> <i>Echinopogon ovalus</i> <i>Elymus scaber</i> <i>Glycine clandestina</i> <i>Lomandra longifolia</i> <i>Microlaena stipoides</i> <i>Platylobium formosum</i> <i>Poa sieberiana</i> var. <i>sieberiana</i>	Austral Bugle Tasman Flax-lily Common Hedgehog-grass Common Wheat-grass Twining Glycine Spiny-headed Mat-rush Weeping Grass Handsome Flat-pea Grey Tussock-grass	<i>Blechnum nudum</i> <i>Carex appressa</i> <i>C. fascicularis</i> <i>Echinopogon ovalus</i> <i>Lomandra longifolia</i> <i>Mentha laxiflora</i> <i>Microlaena stipoides</i> <i>Poa ensiformis</i> <i>Viola hederacea</i>	Fishbone Water-fern Tall Sedge Leafy Flat-sedge Common Hedgehog-grass Spiny-headed Mat-rush Forest Mint Weeping Grass Sword Tussock-grass Ivy-leaf Violet