



Lower Hume & High Country Landscape Character Type Paper

CONTENTS

Introduction	4
Method	8
Character explained	9
Overview of character types and notable landscape areas	10
Character Type 1 - Victorian Volcanic Plain (Refer to Central Victoria Landscape Assessment)	
Character Type 2 – Rolling Foothills	15
Character Type 3 – Highlands River Valleys	29
Character Type 4 - Central Plains & Rivers (Refer to Central Victoria Landscape Assessment)	
Character Type 5 – Victorian Alps	44
Character Type 6 – Goldfields	58
Character Type 7 – Goulburn Upper	73
Character Type 8 – Highlands	88
Character Type 9 – Highlands Northern Fall	102
Character Type 10 – Lake Eildon and Environs	119
Character Type 11 – Mansfield and Environs	133

To describe in detail the character of the landscape on broad areas of common physical, environmental and cultural characteristics. Describing, classifying and mapping a landscape helps to:

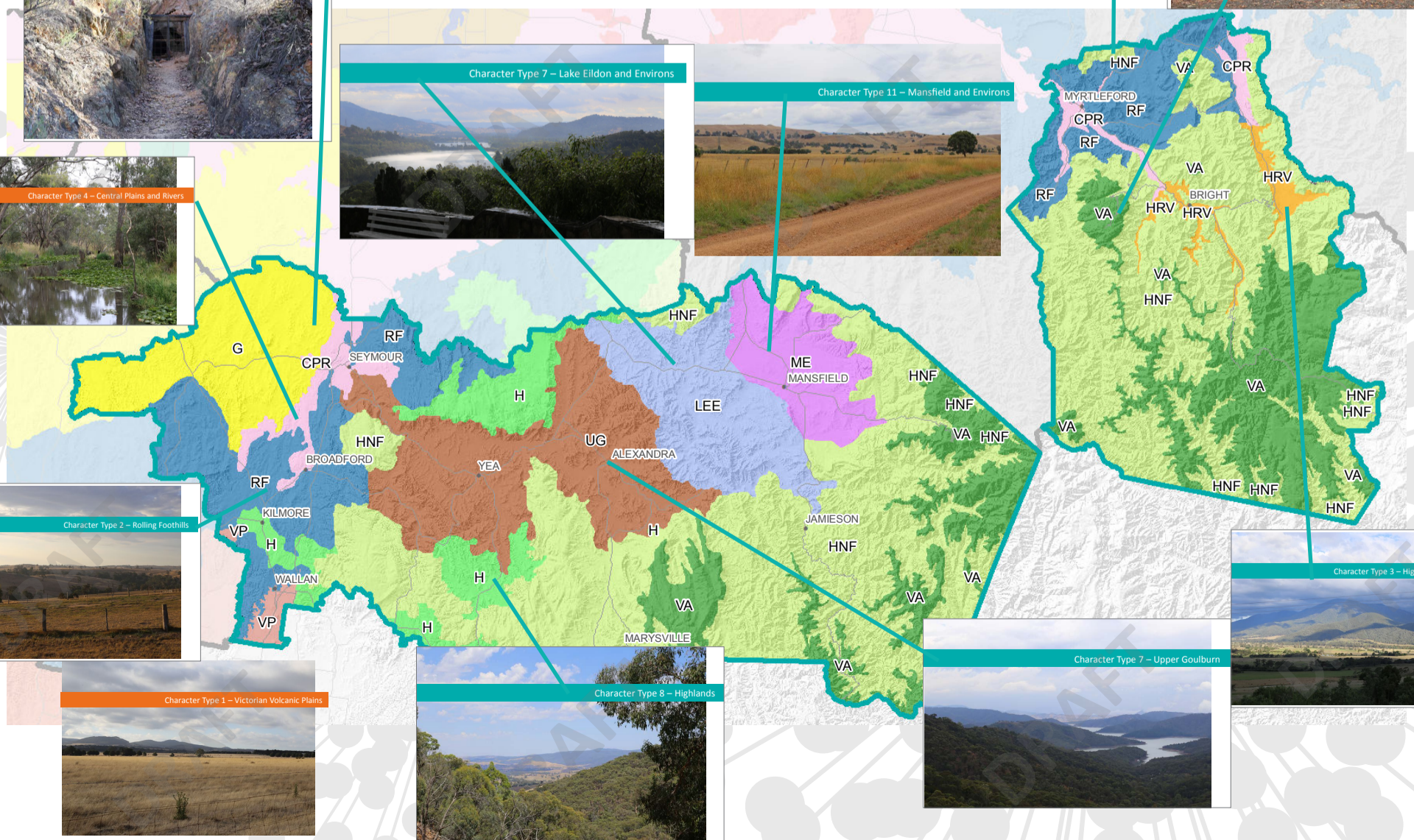
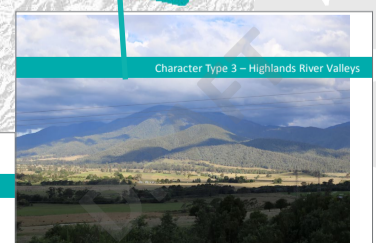
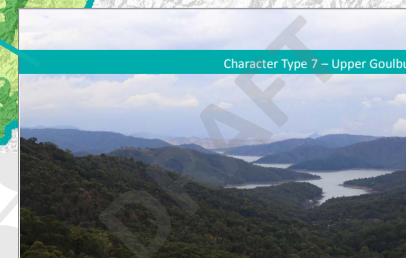
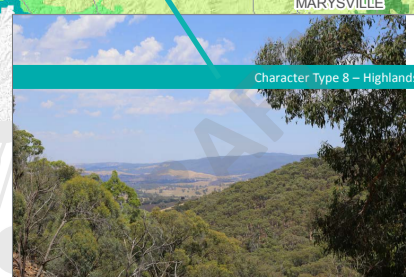
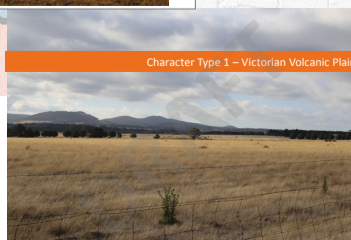
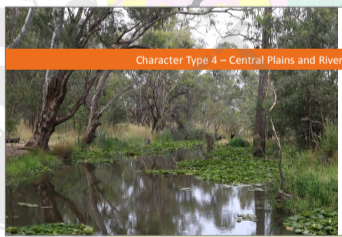
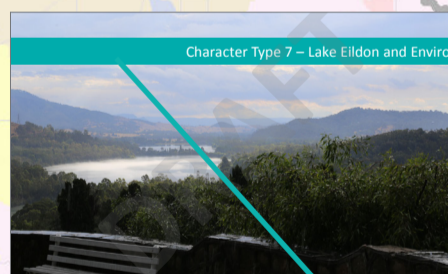
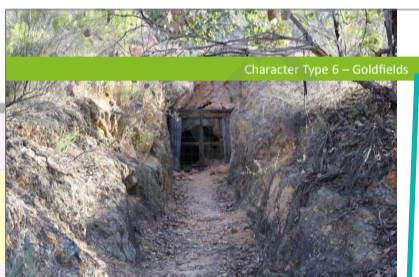
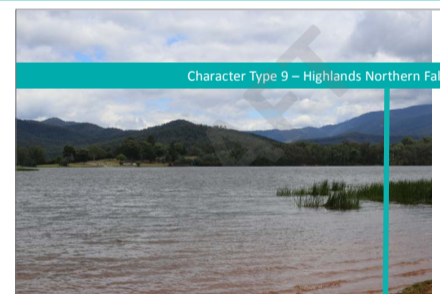
- Monitor change
- Understand sensitivity to future development and change
- Inform conditions to manage future development and change

A character type describes the unique combination of elements and features that make a landscape distinctive from its surrounding environments.

Draft Landscape Character Type Papers

A detailed description of the landscape character is provided for each character type. The information includes:

- Key features and characteristics
- Pattern of viewing - How the landscape is viewed, key lookout points and viewing corridors
- Landscape values - Places, views and features that are valued in the area, as identified through research and community feedback
- Change in the landscape - How the landscape has evolved to its present condition
- Future landscape character directions - A vision for the landscape in the future, and the opportunities and threats to achieve this vision.



CONTENTS

Introduction	1
Method	5
Significance explained	6
Overview of Significant Areas in region	7
Character Type 2 – Rolling Foothills	9
2.1 Tooborac and McHarg Ranges	9
Monument Hill Lookout	13
Old Sydney Road	17
Character Type 3 – Highlands River Valleys	22
3.1 Highland Valleys	22
Character Type 5 – Victorian Alps	28
5.1 Alpine National Park	28
5.2 Mount Buffalo National Park and Lake Buffalo	35
5.3 Yarra Ranges National Park	42
Mount Porepunkah Lookout	48
Character Type 7 – Upper Goulburn	52
7.1 Tallarook Ranges and Horans Track	52
Acheron Cutting	58
Eglington Cutting	62
Switzerland Ranges Drives	66
Character Type 9 – Highlands Northern Fall	70
9.2 Cathedral Ranges	70
9.3 Kinglake National Park	74
9.4 Mount Stanley Scenic Reserve	
Tawonga Gap Lookout	78
Mansfield-Woods Point Road, Jamieson to Knockwood	82
Nicholl Lookout	86
Wood's Lookout	90
Apex Tower Lookout	94
Steavenson Falls Lookout	98
Character Type 10 – Lake Eildon and Environs	103
10.1 Lake Eildon National Park	103
Midland Highway	109
Character Type 11 – Mansfield and Environs	114
11.1 Mansfield to Mount Buller	114
11.2 Mount Samaria State Park (Refer to Upper Murray Landscape Assessment Study)	

Lower Hume & High Country Landscape Significance & View Assessment Paper

This study assesses the visual beauty of a landscape, taking into consideration other values such as historical, environmental and social values. This paper assesses significant areas and views. Views include a view from one location, for example a look out and viewing corridors, for example a scenic drive.

A landscape is considered aesthetically significant if it is beautiful to look at. The visual beauty is assessed by considering:

- prominent landmarks (eg mountain range) or a set of features (eg as river red gums or dry stone walls) that may evoke an emotional response,
- contrasts or edges of where two landscapes meet (the edge of a forest or lake), or where two landforms meet (a mountain range and a plain).
- the composition of the landscape including arrangements or patterns or colour, textures, features.

Significant Views

The study assessed views that are:

- accessible, preferably by vehicle, and located on public land
- designated lookout point with interpretive information

Draft Landscape Significance and Views Papers

This paper includes information about:

- Landscape and views identified as potentially significant
- Reasons for significance and landscape values
- Existing planning scheme provisions relating to these areas
- Management objectives.

